



STAIR & RAILING PRODUCTS BY



HOUSE OF
FORGINGS

Powder Coated & Stainless Steel

**House of Forgings
is the benchmark in
the stair and railing
industry, offering an
unsurpassed
selection of quality
products and
expert service.**

Our vast selection of products will meet the needs of even the most discerning customers. Whether selecting a powder coated finish or stainless steel, our newels, balusters and accessories will compliment a broad range of architectural styles.

STAIR & RAILING PRODUCTS BY



**HOUSE OF
FORGINGS**

Table of Contents

POWDER COATED & STAINLESS STEEL	2-53
Stainless Steel Cable Railing	2-5
Finishes & Patinas	6-7
Wentworth	8-11
Aalto	12-15
Tuscan	16-21
Orleans	22-23
Monte Carlo	24-25
Endecor	26-27
Designer	28-29
Stainless	30-31
Santa Fe	32-33
Gothic	34-35
Round	36-39
Versatile	40-43
Ribbon	44-47
Twist	48-51
Accessories	52-53
FORGED PANELS	54-75
Rebecca	55-57
Tuscany	58-61
Seville	62-63
Milano	64-66
Bordeaux	68-71
Regency	72-75
WOOD	76-86
Newels & Balusters	78-79
Elegante & Box Newels	80-81
Handrail & Fittings	82-83
Treads	84
Starter Steps	85
Lumber & Plywood	85
Moulding	86
Accessories	87
COMPANY & PRODUCT INFORMATION	88

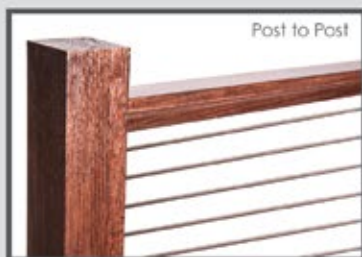
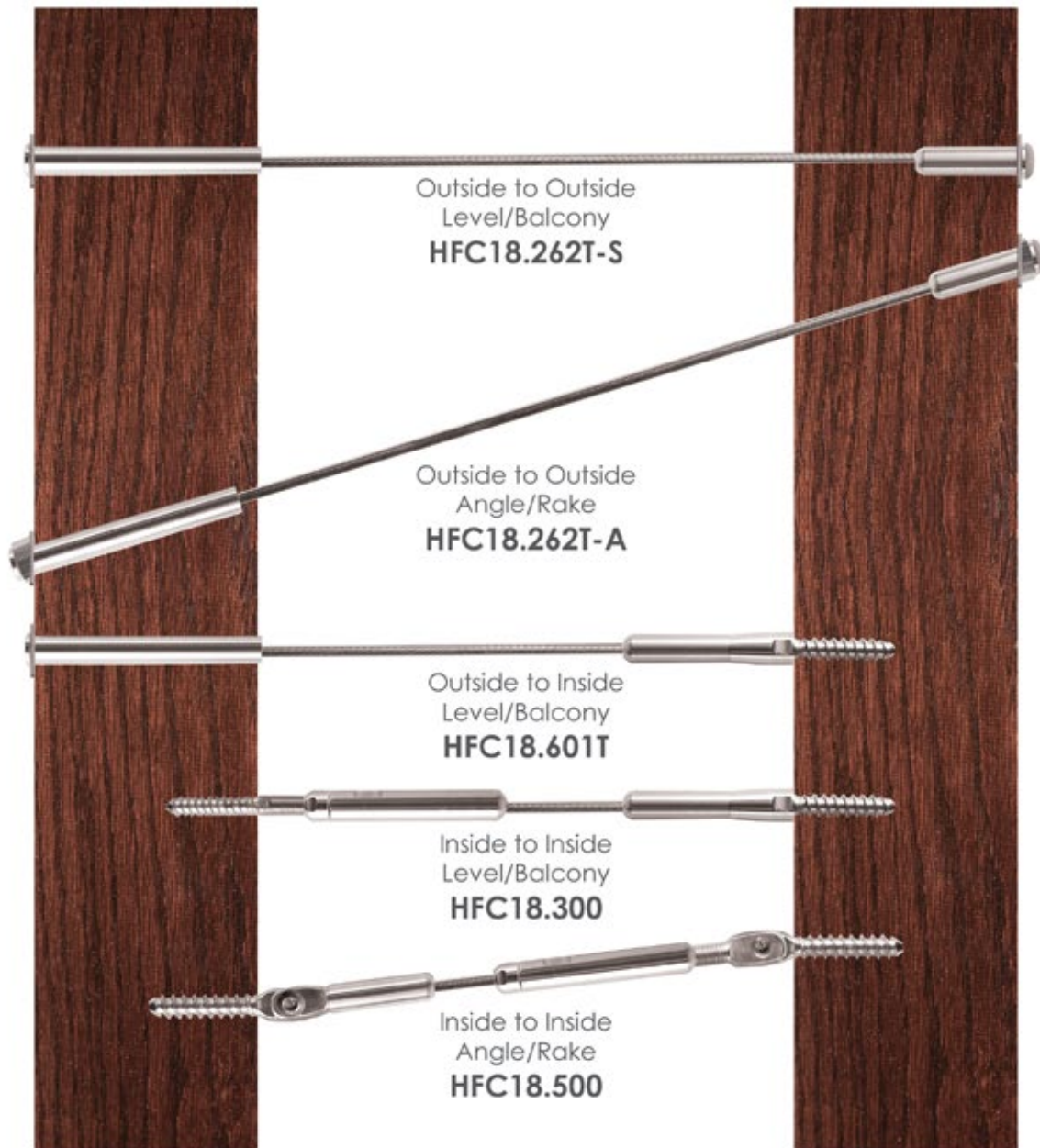


Red Oak 4000 Newels, 6084 Handrail with stainless round bar bracket (shown)

Create the ideal modern aesthetic by combining stainless steel cable and rich oak. The expansive views allowed for by cable make it ideal for balconies as well as staircases.

— Stainless Steel —

Cable Railing



Outside to Outside
Level/Balcony
HFC18.262T-S



Outside to Outside
Angle/Rake
HFC18.262T-A



Outside to Inside
Level/Balcony
HFC18.601T



Pre Swaged 1/8" cable (5',10',15',18')

HFC18-5T (5ft) Swaged Threaded Stud
HFC18-10T (10ft) Swaged Threaded Stud
HFC18-15T (15ft) Swaged Threaded Stud
HFC18-18T (18ft) Swaged Threaded Stud

Inside to Inside
Level/Balcony
HFC18.300



Inside to Inside
Angle/Rake
HFC18.500

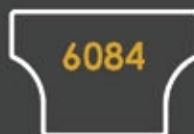


Pre Swaged 1/8" cable (5',10',15',18')

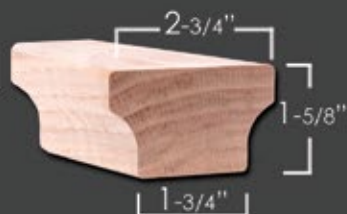
HFC18-5 (5ft) Swaged Ferrule
HFC18-10 (10ft) Swaged Ferrule
HFC18-15 (15ft) Swaged Ferrule
HFC18-18 (18ft) Swaged Ferrule

* All components are made from 316 Stainless Steel for marine grade corrosion resistance.

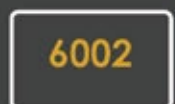
Modern Handrail



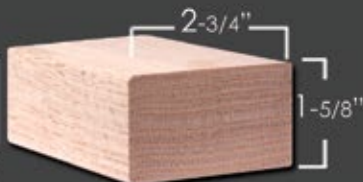
6084
Modern Hand Rail
HT. 1-3/4"
W. 2-5/8"



6084 Straight Rail
Available in 8' & 16'
No fittings available



6002
Modern Hand Rail
HT. 1-5/8"
W. 2-3/4"



6002 Straight Rail
Available in 8' & 16'
No fittings available

Wall Mount Handrail Bracket



HF17.4002
HT. 2-1/2"
Base = 1-1/2" x 2"
Extends 3-1/4" off wall
ADJUSTABLE



mounting hardware included



Newel



4000
HT. 54"
W = 3-1/4"

Intermediate Newel



4923-41
HT. 41"
W = 1-3/4"



Stainless Newel (cut to length for brackets)



HF17.1.2-T
Ends: 1-3/16" Rd.
HT. 47"
Wt. 5.7 lbs.
TUBULAR

Newel Mount Handrail Bracket



HF17.4001
HT. 1-3/4"
Base = 1-1/2" sq.
ADJUSTABLE

mounting hardware included



Newel Cap



SQUARE CAP-4000
3-1/4" Square
3/4" x 1" dowel



Insert Tube



Length: 1-1/2"
HFC18.TUBE

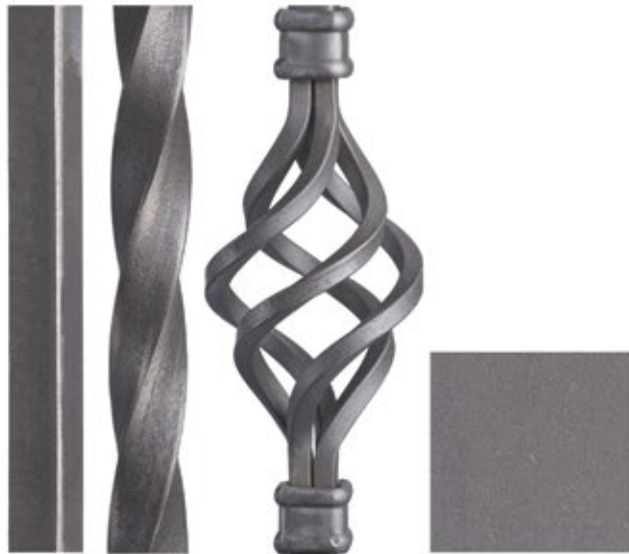
Release Key



HFC18.KEY

* All wood parts stocked in Red Oak

Finishes & Patinas



RAW IRON (RAW)

This is raw (unfinished) iron that needs to be painted or powder coated.



SATIN BLACK (STB)



ASH GREY (AG)



SILVER VEIN (SP)



COPPER VEIN (CV)



OIL RUBBED BRONZE (ORB)



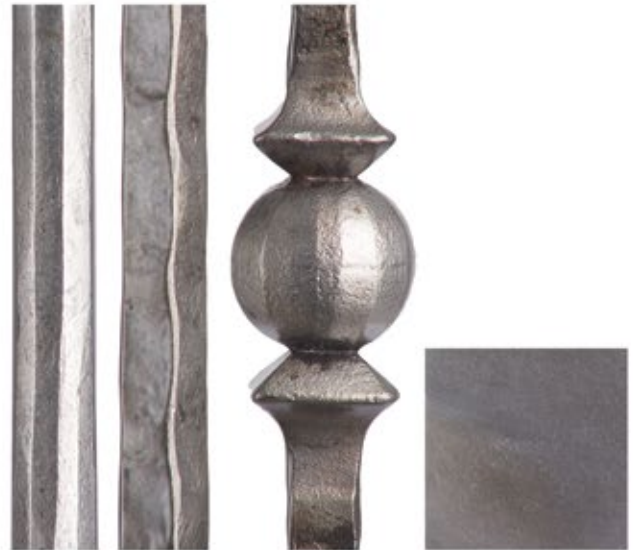
OIL RUBBED COPPER (ORC)



ANTIQUE NICKEL (AN)



VINTAGE BRASS (VB)



SATIN CLEAR (SC)

This is a clear finish over RAW/unfinished iron, variations in surface color may occur.



DORADO GOLD (GD)



STAINLESS STEEL

THESE FINISHES HAVE BEEN PROFESSIONALLY PHOTOGRAPHED WITH THE HIGHEST INTEGRITY. OUR GOAL IS TO PRODUCE THE MOST REALISTIC MATCH TO THE ACTUAL FINISHES, HOWEVER SOME SLIGHT VARIANCES MAY OCCUR.
All images are the sole property of House of Forgings, LLC. and cannot be copied or reproduced without written permission.



Oil Rubbed Bronze (shown)

WENTWORTH | COLLECTION

Inspired by old world English design, Wentworth Collection is an ode to an era of simple craftsmanship and metalsmithing. Hand forged design available in our most popular finishes & patinas.



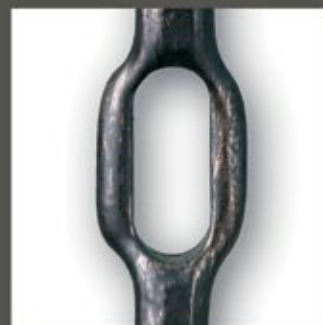
Satin Black (shown)



Satin Clear (shown)



Satin Black (shown)



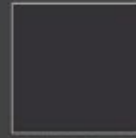
Oil Rubbed Bronze (shown)

NEW WENTWORTH

ROUND HAND FORGED SQUARE RUSTIC HAMMERED



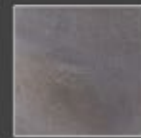
Finishes & Patinas



SATIN BLACK
(STB)



OIL RUBBED
BRONZE
(ORB)



SATIN CLEAR
(SC)

ACCESSORIES

Round level base shoes
Round angled base shoes

HF16.3.35
HF16.3.36

Square level base shoes
Square angled base shoes

HF16.3.38
HF16.3.39

Round newel mounting kit
Square newel mounting kit

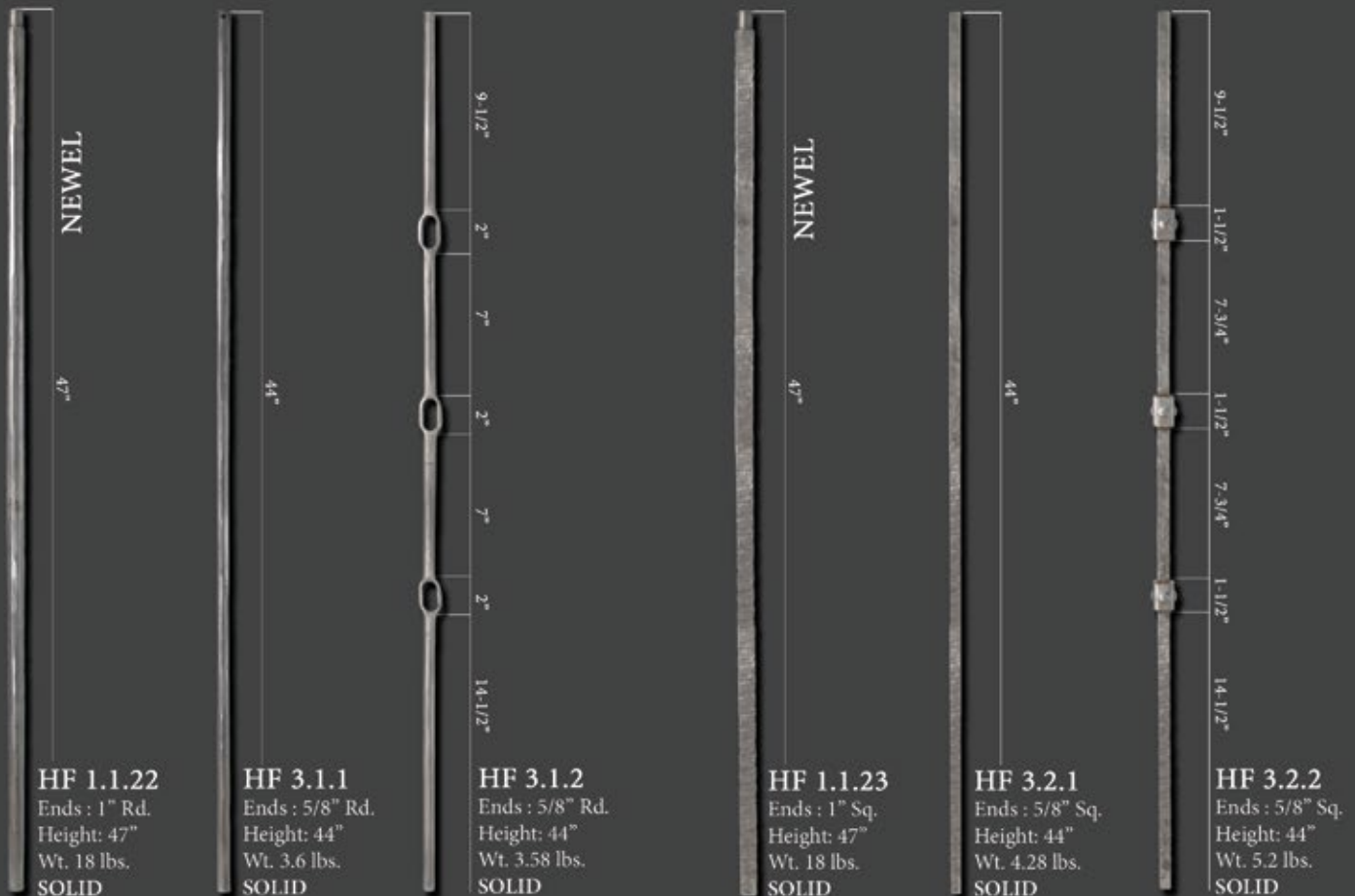
HF16.3.33
HF16.3.31

Photos: J.
Photos: N.

Photos: C.
Photos: G.

Photos: U.
Photos: T.

For photos and full accessory details see pages 52-53



Hand forged product, variance in specifications may occur.



Satin Black (shown)



Oil Rubbed Bronze (shown)

AALTO



Ash Grey (shown)

Ash Grey (shown)

Our Aalto collection is a compliment to the modern design aesthetic. Adorn any space with the clean lines and open detail of these modern balusters and panels.



Satin Black (shown)



Satin Black (shown)



Satin Black (shown)



Ash Grey (shown)



Ash Grey (shown)

AALTO

SQUARE



Finishes & Patinas

NEW



SATIN BLACK
(STB)



SILVER VEIN
(SP)



COPPER VEIN
(CV)



ASH GREY
(AG)



DORADO GOLD
(GD)

	NEWELS	HF16.5.8	HF16.5.8-T	BALUSTERS	HF16.2.1	HF16.2.1-T	HF16.2.1-50	HF16.1.30	HF16.1.30-T	HF16.1.31	HF16.1.31-T	HF16.1.32	HF16.1.32-T	HF16.6.1	HF16.6.2	HF16.6.3	HF16.6.4	HF16.6.5	HF16.6.7	HF9.4.1	HF9.4.2	HF9.4.3	HF9.4.4	HF9.4.11	HF9.4.22	HF9.4.33	HF9.4.44
STB		•			•	•	•	•		•		•		•	•	•	•	•	•	•	•	•	•	•	•	•	•
SP		•			•	•		•		•		•															
CV		•			•	•		•		•		•															
AG			•			•			•		•		•	•	•	•	•	•	•	•	•	•	•	•	•	•	•
GD		•				•								•		•			•								

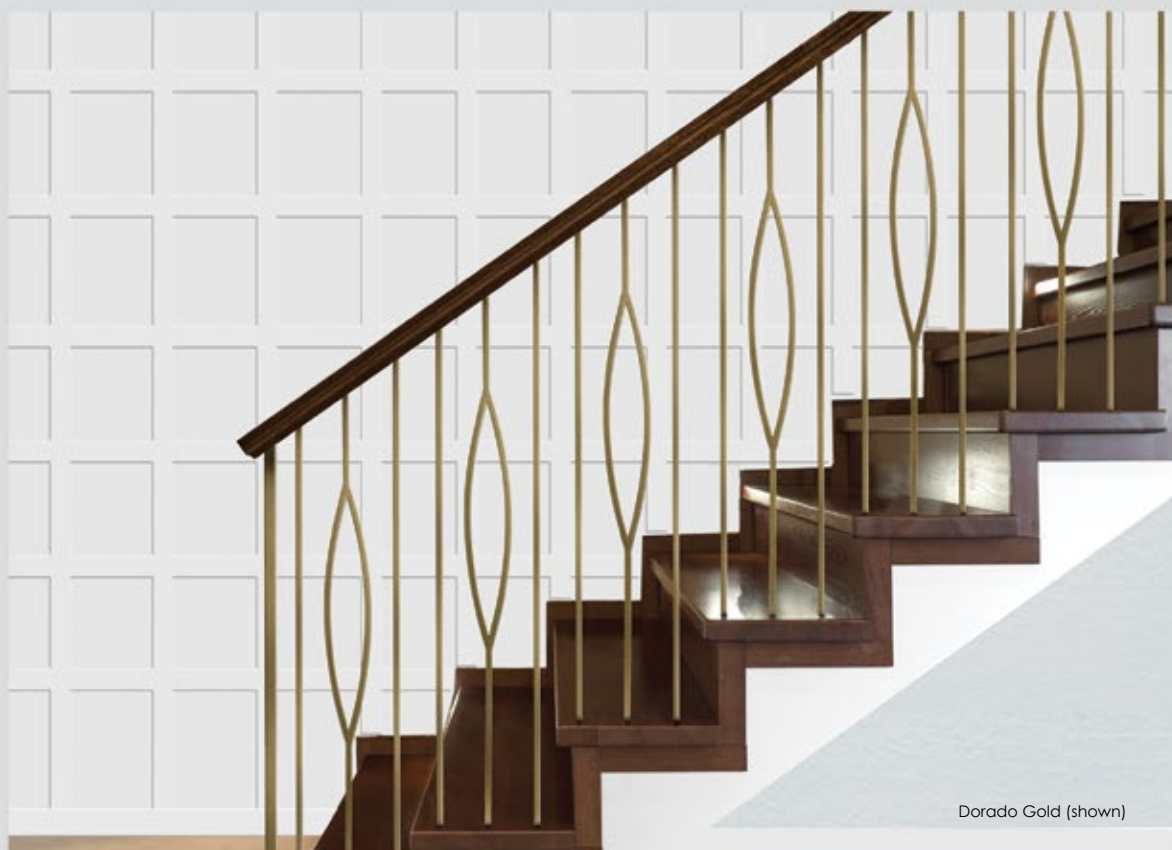
ACCESSORIES

Level base shoes
Level base collars
Angled base shoes
Newel mounting kit

HF16.3.1, HF16.3.19
HF16.3.4, HF16.3.5,
HF16.3.2, HF16.3.30
HF16.2.3

Photos: A. A.
Photos: D. H.
Photos: E. G.
Photos: T.

For photos and full accessory details see pages 52-53



Dorado Gold (shown)



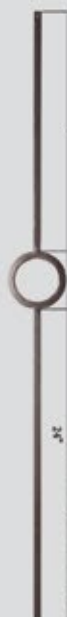
HF 16.5.8
Ends : 1-3/16" Sq.
Height: 48"
Wt. 19 lbs.
SOLID



HF 16.2.1
Ends : 1/2" Sq.
Height: 44"
Wt. 3 lbs.
SOLID

HF 16.2.1-T
Ends : 1/2" Sq.
Height: 44"
Wt. 1.2 lbs.
TUBULAR

HF 16.2.1-50
Ends : 1/2" Sq.
Height: 50"
Wt. 3.2 lbs.
SOLID



HF 16.1.30
Ends : 1/2" Sq.
Height: 44"
Wt. 3.4 lbs.
SOLID

HF 16.1.30-T
Ends : 1/2" Sq.
Height: 44"
Wt. 1.6 lbs.
TUBULAR



HF 16.1.31
Ends : 1/2" Sq.
Height: 44"
Wt. 3.6 lbs.
SOLID

HF 16.1.31-T
Ends : 1/2" Sq.
Height: 44"
Wt. 1.75 lbs.
TUBULAR



HF 16.1.32
Ends : 1/2" Sq.
Height: 44"
Wt. 10 lbs.
SOLID

HF 16.1.32-T
Ends : 1/2" Sq.
Height: 44"
Wt. 5 lbs.
TUBULAR



HF 16.6.1
Ends : 1/2" Sq.
Height: 44"
Wt. 1.2 lbs.
TUBULAR

NEW



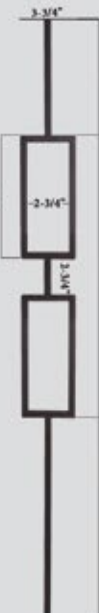
HF 16.6.7
Ends : 1/2" Sq.
Height: 44"
Wt. 1.6 lbs.
TUBULAR



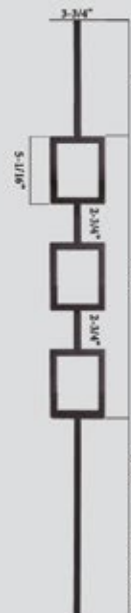
HF 16.6.2
Ends : 1/2" Sq.
Height: 44"
Wt. 1.6 lbs.
TUBULAR



HF 16.6.3
Ends : 1/2" Sq.
Height: 44"
Wt. 1.7 lbs.
TUBULAR



HF 16.6.4
Ends : 1/2" Sq.
Height: 44"
Wt. 1.7 lbs.
TUBULAR



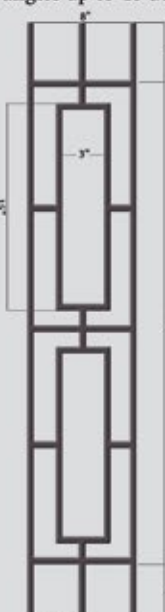
HF 16.6.5
Ends : 1/2" Sq.
Height: 44"
Wt. 1.8 lbs.
TUBULAR

Rake panels fit all angles up to 40 degrees

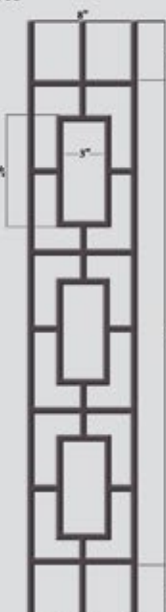
NEW



HF 9.4.1
Ends : 1/2" Sq.
Height: 44"
Wt. 4.4 lbs.
TUBULAR (Level)



HF 9.4.2
Ends : 1/2" Sq.
Height: 44"
Wt. 4.8 lbs.
TUBULAR (Level)



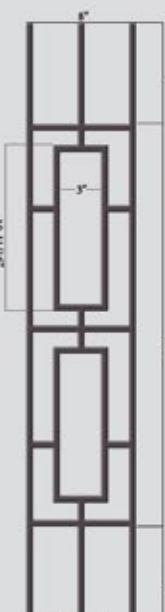
HF 9.4.3
Ends : 1/2" Sq.
Height: 44"
Wt. 5 lbs.
TUBULAR (Level)



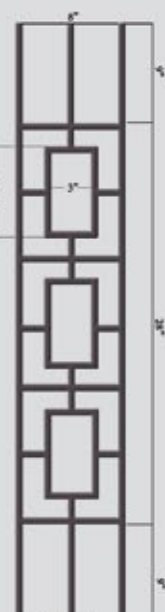
HF 9.4.4
Ends : 1/2" Sq.
Height: 44"
Wt. 5 lbs.
TUBULAR (Level)



HF 9.4.11
Ends : 1/2" Sq.
Height: 46"
Wt. 4.5 lbs.
TUBULAR (Rake)



HF 9.4.22
Ends : 1/2" Sq.
Height: 46"
Wt. 4.7 lbs.
TUBULAR (Rake)



HF 9.4.33
Ends : 1/2" Sq.
Height: 46"
Wt. 4.9 lbs.
TUBULAR (Rake)



HF 9.4.44
Ends : 1/2" Sq.
Height: 46"
Wt. 4.9 lbs.
TUBULAR (Rake)



Satin Clear (shown)

The craftsmanship in these hand-forged balusters exude character and beauty nearly impossible to duplicate. Our Tuscan series is available in both round forged and square hammered profiles. Bring the rustic charm of old world Italy into your home with this unique series.

Oil Rubbed Bronze (shown)

TUSCAN



Vintage Brass (shown)



Oil Rubbed Bronze (shown)

TUSCAN

ROUND HAND FORGED



Finishes & Patinas



RAW IRON
(RAW)



SATIN BLACK
(STB)



COPPER VEIN
(CV)



OIL RUBBED
BRONZE
(ORB)



SATIN CLEAR
(SC)



VINTAGE
BRASS
(VB)

	NEWELS	HF1.1.22	HF1.1.8	HF1.1.9	HF1.1.16	HF1.1.20	HF1.1.21	BALUSTERS	HF2.9.21	HF2.1.5	HF2.1.6	HF2.1.7	HF2.1.9	HF2.1.8	HF2.1.11	HF2.6.8	HF2.6.9	HF2.6.7	HF2.10.2	HF2.10.4	HF2.10.3	HF2.11.40	HF2.11.41
RAW		•		•	•				•				•	•	•	•	•	•	•	•	•		
STB		•	•	•	•	•	•		•	•	•	•	•	•	•	•	•	•	•	•	•	•	•
CV					•				•										•	•	•		
ORB		•	•	•	•	•	•		•	•	•	•	•	•	•	•	•	•	•	•	•	•	•
SC		•			•		•		•							•	•	•	•	•	•		
VB					•	•			•										•	•	•	•	•

ACCESSORIES

Level base shoes
Level base collars
Angled base shoes
Adjustable level base shoes
Adjustable angled base shoes
Newel mounting kit

HF16.3.26
HF16.3.40, HF16.3.43
HF16.3.27
HF16.3.44, HF16.3.46
HF16.3.45, HF16.3.47
HF16.3.33



Photos: J.
Photos: K. O.
Photos: N.
Photos: R.
Photos: S.
Photos: U.

For photos and full accessory details see pages 52-53



NEWEL

47-1/4"

HF 1.1.22
Ends : 1" Rd.
Height: 47-1/4"
Wt. 18 lbs.



NEWEL

17-1/8"

5-3/8"

24-3/4"

HF 1.1.8
Ends : 1" Rd.
Height: 47-1/4"
Wt. 18 lbs.



NEWEL

18-1/8"

3"

26-1/8"

HF 1.1.9
Ends : 1" Rd.
Height: 47-1/4"
Wt. 18 lbs.



NEWEL

17-1/8"

5"

25-1/8"

HF 1.1.16
Ends : 1" Rd.
Height: 47-1/4"
Wt. 18 lbs.



NEWEL

14-13/16"

8-14/16"

24-3/16"

HF 1.1.20
Ends : 1" Rd.
Height: 47-1/4"
Wt. 18 lbs.



NEWEL

14-3/8"

2-3/4"

10-5/8"

22-1/4"

HF 1.1.21
Ends : 1" Rd.
Tapered
Height: 47-1/4"
Wt. 18 lbs.



NEWEL

17-1/2"

4-1/2"

22"

HF 2.1.5
Ends : 9/16" Rd.
Height: 44"
Wt. 2.5 lbs.



NEWEL

12-1/2"

14-1/2"

17"

HF 2.1.6
Ends : 9/16" Rd.
Height: 44"
Wt. 4.2 lbs.



NEWEL

9"

4-1/2"

11"

4-1/2"

15"

HF 2.1.7
Ends : 9/16" Rd.
Height: 44"
Wt. 3 lbs.



HF 2.1.9
Ends : 9/16" Rd.
Height: 44"
Wt. 2.4 lbs.



HF 2.1.8
Ends : 9/16" Rd.
Height: 44"
Wt. 4.2 lbs.



HF 2.1.11
Ends : 9/16" Rd.
Height: 44"
Wt. 3 lbs.



HF 2.6.8
Ends : 9/16" Rd.
Tapered
Height: 44"
Wt. 3.2 lbs.



HF 2.6.9
Ends : 9/16" Rd.
Height: 44"
Wt. 4.2 lbs.



HF 2.6.7
Ends : 9/16" Rd.
Tapered
Height: 44"
Wt. 3.8 lbs.



HF 2.9.21
Ends : 9/16" Rd.
Height: 44"
Wt. 2.4 lbs.



HF 2.10.2
Ends : 9/16" Rd.
Height: 44"
Wt. 3.2 lbs.



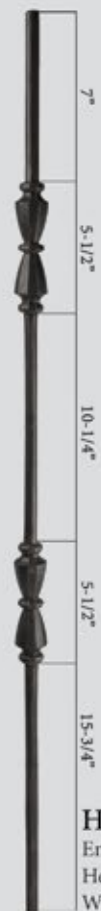
HF 2.10.4
Ends : 9/16" Rd.
Height: 44"
Wt. 4.2 lbs.



HF 2.10.3
Ends : 9/16" Rd.
Height: 44"
Wt. 3.6 lbs.



HF 2.11.40
Ends : 9/16" Rd.
Height: 44"
Wt. 4 lbs.



HF 2.11.41
Ends : 9/16" Rd.
Height: 44"
Wt. 5.2 lbs.



Finishes & Patinas



RAW IRON
(RAW)



SATIN BLACK
(STB)



COPPER VEIN
(CV)



OIL RUBBED
BRONZE
(ORB)



SATIN CLEAR
(SC)



VINTAGE
BRASS
(VB)

	NEWELS	HF1.1.10	HF1.1.11	HF1.1.14	HF1.1.14-T	HF1.1.15	HF1.1.15-T	BALUSTERS	HF2.9.12	HF2.9.11	HF2.9.13	HF2.9.3	HF2.9.4	HF2.9.8	HF2.9.5	HF2.9.6	HF2.1.2	HF2.1.1	HF2.9.20	HF2.9.20-T	HF2.9.28	HF2.9.28-T	HF2.9.27	HF2.9.26	HF2.9.26-T	HF2.9.29	HF2.9.36	HF2.9.37
RAW		•	•	•		•			•	•	•	•	•	•	•	•			•		•		•	•				
STB		•	•	•	•	•	•		•	•	•	•	•	•	•	•	•	•	•	•	•	•	•	•	•	•	•	•
CV			•	•		•			•	•	•			•					•		•		•	•				
ORB		•	•	•	•	•	•		•	•	•	•	•	•	•	•	•	•	•	•	•	•	•	•	•	•	•	•
SC			•	•		•			•	•	•			•					•		•		•	•				
VB			•	•		•			•	•	•			•					•		•		•	•				

ACCESSORIES

Level base shoes
Level base collars
Angled base shoes
Adjustable level base shoes
Adjustable angled base shoes
Newel mounting kit

HF16.3.25
HF16.3.41, HF16.3.42
HF16.3.28
HF16.3.44, HF16.3.46
HF16.3.45, HF16.3.47
HF16.3.31

Photos: C.
Photos: D. H.
Photos: G.
Photos: R.
Photos: S.
Photos: T.

For photos and full accessory details see pages 52-53



HF 1.1.10
Ends : 1" Sq.
Tapered
Height: 47-1/4"
Wt. 18 lbs.



HF 1.1.11
Ends : 1" Sq.
Tapered
Height: 47-1/4"
Wt. 18 lbs.



HF 1.1.14
Ends : 1" Sq.
Height: 47-1/4"
Wt. 18 lbs.
SOLID
HF 1.1.14-T
Ends : 1" Sq.
Height: 47-1/4"
Wt. 2.30 lbs.
TUBULAR



HF 1.1.15
Ends : 1" Sq.
Height: 47-1/4"
Wt. 18 lbs.
SOLID
HF 1.1.15-T
Ends : 1" Sq.
Height: 47-1/4"
Wt. 5.30 lbs.
TUBULAR



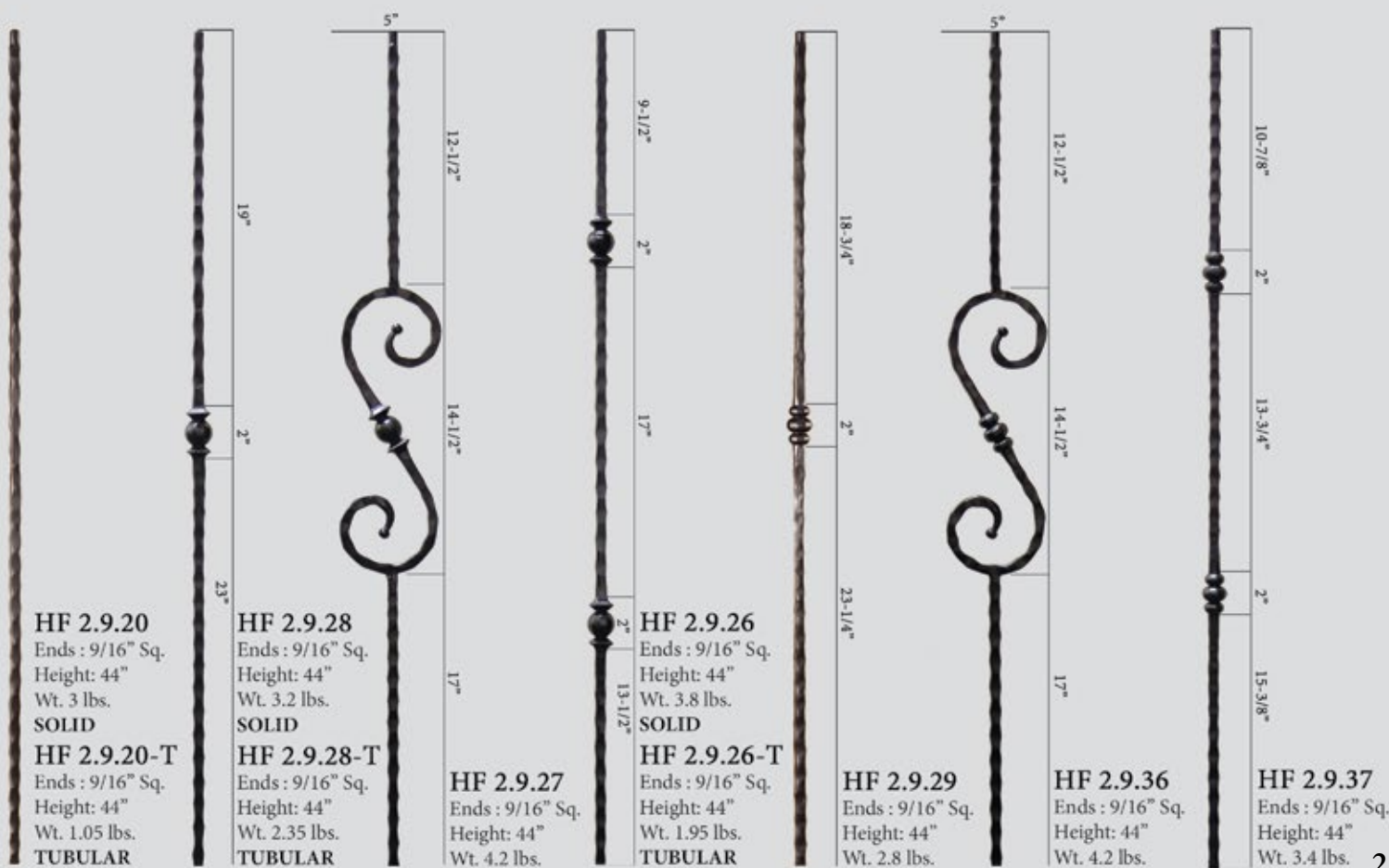
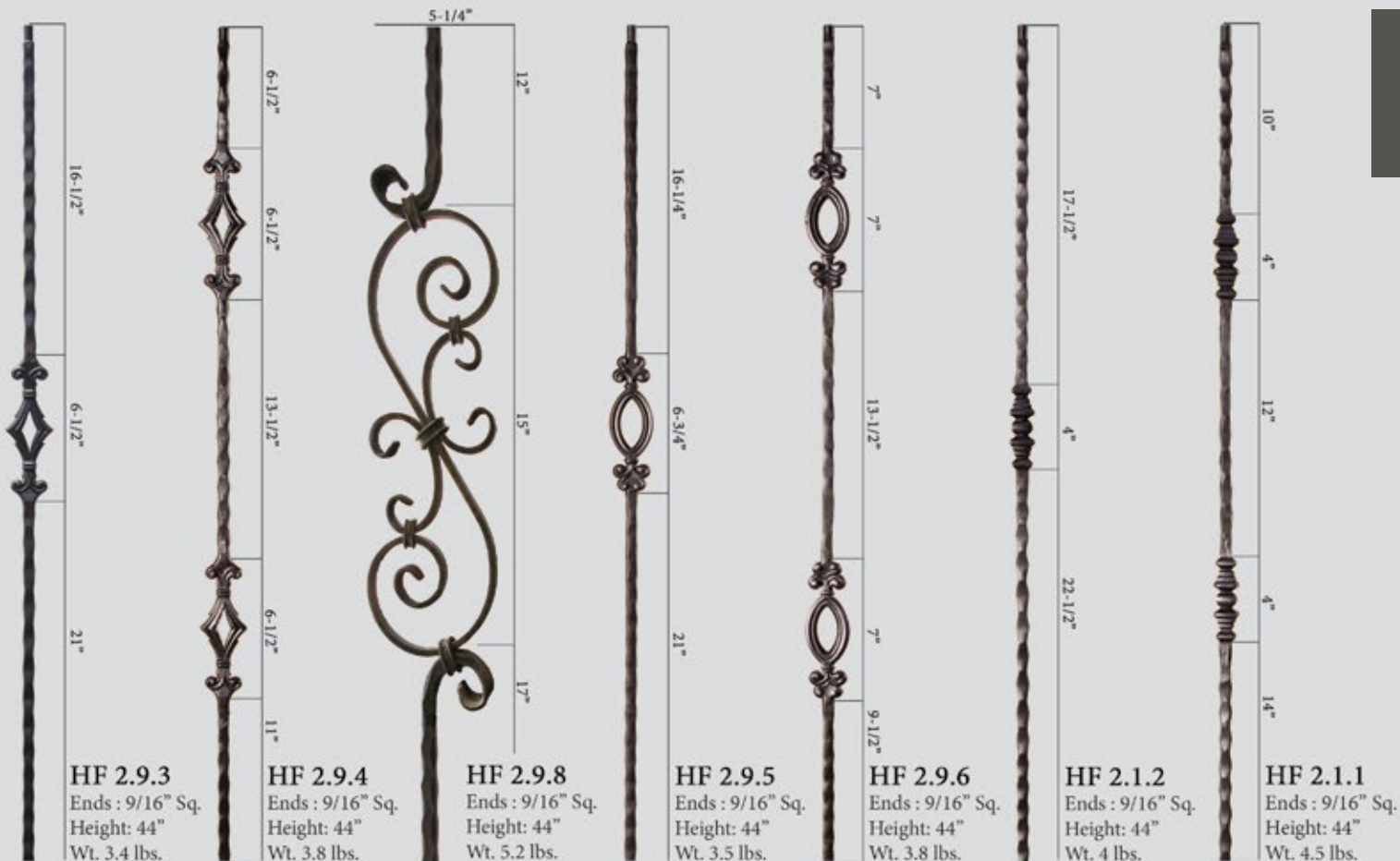
HF 2.9.12
Ends : 9/16" Sq.
Tapered
Height: 44"
Wt. 3.8 lbs.



HF 2.9.11
Ends : 9/16" Sq.
Height: 44"
Wt. 5 lbs.



HF 2.9.13
Ends : 9/16" Sq.
Tapered
Height: 44"
Wt. 5.5 lbs.



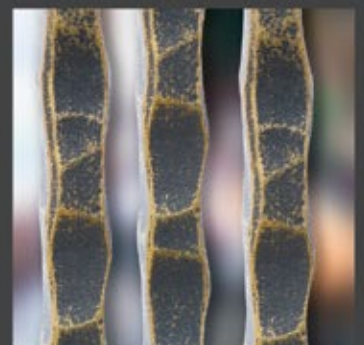
ORLEANS

Oil Rubbed Bronze (shown)

House of Forgings is pleased to feature our Orleans Series balusters which is a tribute to the renowned culture, customs and architecture of the great city of New Orleans. These exclusive designs are available with single or double elements and finished in Oil Rubbed Bronze and Vintage Brass patinas.

Orleans

Oil Rubbed Bronze (shown)



Vintage Brass (shown)

ORLEANS

SQUARE HAND HAMMERED



Finishes & Patinas



RAW IRON
(RAW)



OIL RUBBED
BRONZE
(ORB)



VINTAGE
BRASS
(VB)



NEWEL

HF 1.1.14
Ends : 1" Sq.
Height: 47"
Wt. 18 lbs.



HF 2.9.20
Ends : 9/16" Sq.
Height: 44"
Wt. 3 lbs.



HF 2.9.23
Ends : 9/16" Sq.
Height: 44"
Wt. 3.5 lbs.



HF 2.9.24
Ends : 9/16" Sq.
Height: 44"
Wt. 3.9 lbs.

ACCESSORIES

Level base shoes
Level base collars
Angled base shoes
Adjustable level base shoes
Adjustable angled base shoes
Newel mounting kit

HF16.3.25
HF16.3.41, HF16.3.42
HF16.3.28
HF16.3.44, HF16.3.46
HF16.3.45, HF16.3.47
HF16.3.31

Photos: C.
Photos: D. H.
Photos: G.
Photos: R.
Photos: S.
Photos: T.

For photos and full accessory details see pages 52-53

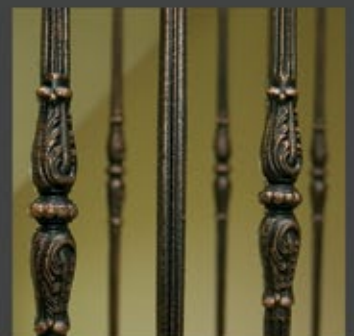


MONTE CARLO

Oil Rubbed Bronze (shown)

Drawing inspiration from the great Roman columns, the Monte Carlo series stands alone in style and elegance. The robust designs compliment the prominence of even the grandest estates. The intricately cast components are highlighted by the Oil Rubbed Bronze patina.

Oil Rubbed Bronze (shown)



MONTE CARLO

ROUND



Finishes & Patinas



SATIN BLACK
(STB)



OIL RUBBED
BRONZE
(ORB)



HF 18.1.1-T

Ends : 1-3/16" Rd.

Height: 48"

Wt. 18.55 lbs.

TUBULAR

*Middle section is hollow cast iron,
ends are hollow cast steel



HF 18.2.1-T

Ends : 5/8" Rd.

Height: 44"

Wt. 1.75 lbs.

TUBULAR

*Middle section is hollow cast aluminum, ends are hollow cast steel



HF 18.2.2-T

Ends : 5/8" Rd.

Height: 44"

Wt. 1.50 lbs.

TUBULAR

ACCESSORIES

Level base shoes

Angled base shoes

Newel mounting kit

HF16.3.50

HF16.3.51

HF16.3.14

Photos: I.

Photos: M.

Photos: U.

For photos and full accessory details see pages 52-53





ENDECOR

Vintage Brass (shown)

A House of Forgings exclusive, the Endecor® balustrade system has been featured by some of the top homebuilders in the nation. For the discerning client who wants to stand apart, these balusters are truly unique in form and function.

Satin Black (shown)



US D672,064 S
BALUSTER END PIECE



Additional U.S and Canadian patents pending.

ENDECOR®

SQUARE



Finishes & Patinas



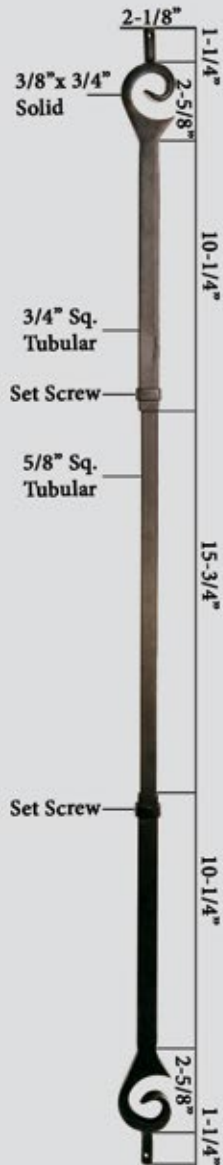
SATIN BLACK
(STB)



OIL RUBBED
BRONZE
(ORB)

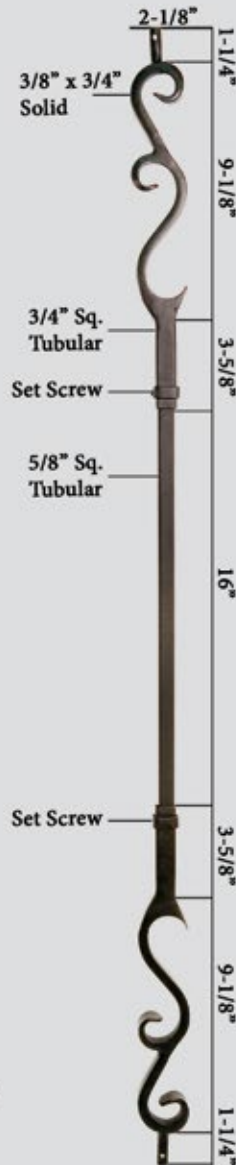


VINTAGE
BRASS
(VB)



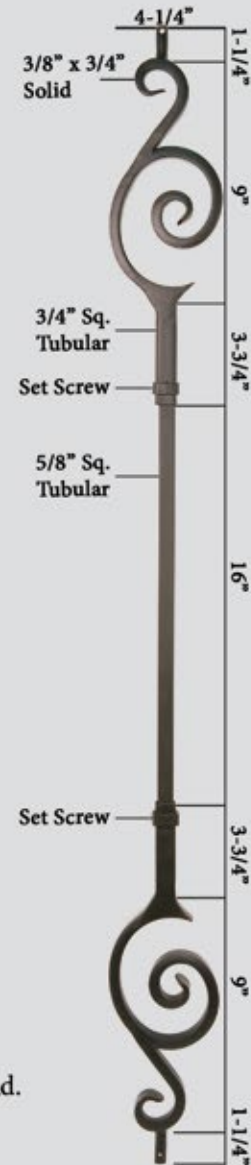
HF16.7.1

Ends : 9/16" Rd.
Height: 44"
Wt. 3.8 lbs.



HF16.7.2

Ends : 9/16" Rd.
Height: 44"
Wt. 3.8 lbs.



HF16.7.3

Ends : 9/16" Rd.
Height: 44"
Wt. 3.8 lbs.

↑
US D672,064 S
BALUSTER END PIECE

Additional U.S and Canadian patents pending.

DESIGNER



Oil Rubbed Bronze (shown)

The designer series offers an upgraded look at an affordable price for homebuilders and homeowners alike. These hollow balusters are offered in square or round and compliment a wide range of architectural styles.

Oil Rubbed Bronze (shown)



Oil Rubbed Bronze (shown)

DESIGNER TUBULAR

ROUND

SQUARE



Finishes & Patinas



SATIN BLACK
(STB)



OIL RUBBED
BRONZE
(ORB)



HF 16.8.1
Ends : 5/8" Rd.
Height: 44"
Wt. 2 lbs.
TUBULAR



HF 16.8.2
Ends : 5/8" Rd.
Height: 44"
Wt. 2 lbs.
TUBULAR



HF 16.8.3
Ends : 5/8" Rd.
Height: 44"
Wt. 2 lbs.
TUBULAR



HF 16.8.4
Ends : 5/8" Rd.
Height: 44"
Wt. 3 lbs.
TUBULAR



HF 16.8.5
Ends : 5/8" Rd.
Height: 44"
Wt. 3 lbs.
TUBULAR



HF 16.8.6
Ends : 5/8" Sq.
Height: 44"
Wt. 2 lbs.
TUBULAR



HF 16.8.10
Ends : 5/8" Sq.
Height: 44"
Wt. 2 lbs.
TUBULAR



HF 16.8.11
Ends : 5/8" Sq.
Height: 44"
Wt. 2 lbs.
TUBULAR



HF 16.8.8
Ends : 5/8" Sq.
Height: 44"
Wt. 3 lbs.
TUBULAR



HF 16.8.9
Ends : 5/8" Sq.
Height: 44"
Wt. 4 lbs.
TUBULAR

ACCESSORIES

Level base shoes
Angled base shoes

HF16.3.35, HF16.3.38
HF16.3.36, HF16.3.39

Photos: J. C.
Photos: N. G.

For photos and full accessory details see pages 52-53



STAINLESS STEEL



Stainless steel is a mainstay in the modern and contemporary home decor market. The simple, honest lines of this profile is the perfect compliment to your urban dwelling. Now, offered in a more affordable tubular style for the budget savy buyer.



STAINLESS STEEL



<p>NEWEL</p> <p>HF17.1.2 Ends : 1-3/16" Rd. Height: 47" Wt. 18 lbs. SOLID</p> <p>HF17.1.2-T Ends : 1-3/16" Rd. Height: 47" Wt. 5.7 lbs. TUBULAR</p>	<p>NEWEL</p> <p>HF17.12.1-T Ends : 1-3/16" Rd. Height: 47" Wt. 5.7 lbs. TUBULAR</p> <p>HF17.11.3 Ends : 9/16" Rd. Height: 44" Wt. 3.8 lbs. SOLID</p>	<p>HF17.11.4 Ends : 9/16" Rd. Height: 44" Wt. 4 lbs. SOLID</p> <p>HF17.11.5 Ends : 9/16" Rd. Height: 44" Wt. 3.5 lbs. SOLID</p>	<p>HF17.11.5-T Ends : 9/16" Rd. Height: 44" Wt. 1.25 lbs. TUBULAR</p> <p>HF17.11.21-T Ends : 9/16" Rd. Height: 44" Wt. 1.25 lbs. TUBULAR</p>	<p>HF17.11.23-T Ends : 9/16" Rd. Height: 44" Wt. 1.25 lbs. TUBULAR</p>
--	---	---	--	--

ACCESSORIES

Level base collar
Newel mounting kit

HF17.11.22
HF17.2.3

Photos: L.
Photos: V.

For photos and full accessory details see pages 52-53



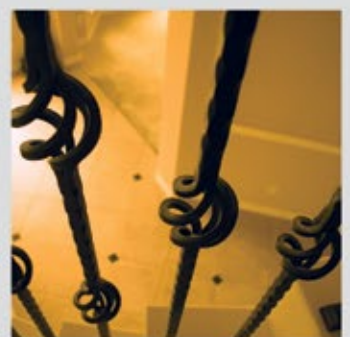


SANTA FE

Satin Black (shown)

Our Santa Fe collection of edge hammered balusters are reminiscent of the old world Spanish architecture found in rustic Mexican villas. The bold, distinct hammering is the key to turning your home into an impressive estate.

Satin Black (shown)



SANTA FE

SQUARE EDGE HAMMERED



Finishes & Patinas



SATIN BLACK
(STB)



HF 16.3.8
Ends : 9/16" Sq.
Height: 44"
Wt. 3.7 lbs.



HF 16.1.26
Ends : 9/16" Sq.
Height: 44"
Wt. 4 lbs.



HF 16.1.27
Ends : 9/16" Sq.
Height: 44"
Wt. 4.5 lbs.



HF 16.1.15
Ends : 9/16" Sq.
Height: 44"
Wt. 3 lbs.



HF 16.1.22
Ends : 9/16" Sq.
Height: 44"
Wt. 3.6 lbs.

ACCESSORIES

Level base shoes

Angled base shoes

Adjustable level base shoes

Adjustable angled base shoes

HF16.3.3

HF16.3.17

HF16.3.44, HF16.3.46

HF16.3.45, HF16.3.47

Photos: A.

Photos: E.

Photos: R.

Photos: S.

For photos and full accessory details see pages 52-53



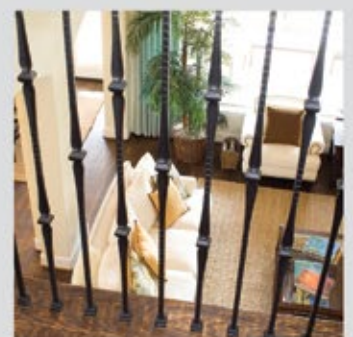


GOTHIC

Oil Rubbed Copper (shown)

The inspiration for our Gothic series was the timeless ironwork featured in many European castles and estates. These prominent designs will compliment old world hardware and fixtures found throughout many homes today.

Oil Rubbed Copper (shown)



GOTHIC

SQUARE FACE HAMMERED



Finishes & Patinas



RAW IRON
(RAW)



SATIN BLACK
(STB)



COPPER VEIN
(CV)



OIL RUBBED
BRONZE
(ORB)



OIL RUBBED
COPPER
(ORC)



NEWEL

HF 16.5.6
Ends : 1-3/16" Sq.
Height: 48"
Wt. 22 lbs.



HF 16.1.7
Ends : 9/16" Sq.
Height: 44"
Wt. 4 lbs.



HF 16.5.2
Ends : 9/16" Sq.
Height: 44"
Wt. 3.5 lbs.



HF 16.1.8
Ends : 9/16" Sq.
Height: 44"
Wt. 3.8 lbs.



HF 16.1.9
Ends : 9/16" Sq.
Height: 44"
Wt. 4.5 lbs.

ACCESSORIES

Level base shoes
Level base collars
Angled base shoes
Adjustable level base shoes
Adjustable angled base shoes
Newel mounting kit

HF16.3.3, HF16.3.20, HF16.3.25
HF16.3.41, HF16.3.42
HF16.3.17, HF16.3.28
HF16.3.44, HF16.3.46
HF16.3.45, HF16.3.47
HF16.2.3

Photos: A. A. C.
Photos: D. H.
Photos: E. G.
Photos: R.
Photos: S.
Photos: T.

For photos and full accessory details see pages 52-53





Satin Black (shown)

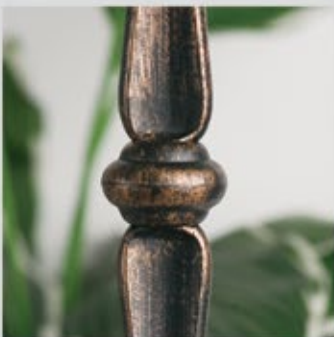
The style of this collection provides a sleek appearance that strikes a perfect balance between traditional and contemporary.

Ash Grey (shown)

ROUND



Oil Rubbed Bronze/Dorado Gold/Satin Black (shown)



Oil Rubbed Bronze (shown)



Dorado Gold (shown)



Ash Grey/Satin Black (shown)

ROUND

ROUND SMOOTH



Finishes & Patinas



RAW IRON
(RAW)



SATIN BLACK
(STB)



COPPER VEIN
(CV)



OIL RUBBED
BRONZE
(ORB)



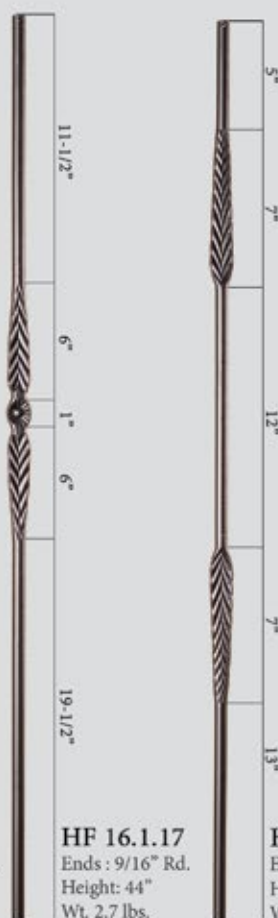
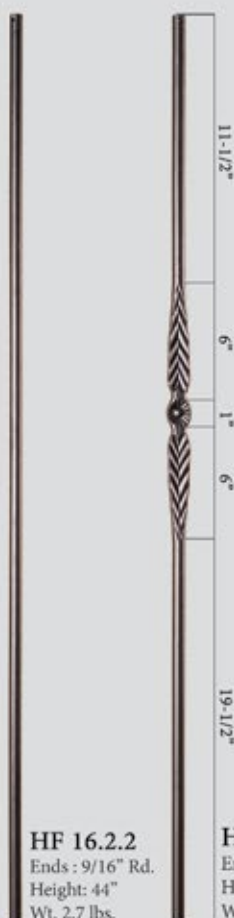
ASH GREY
(AG)

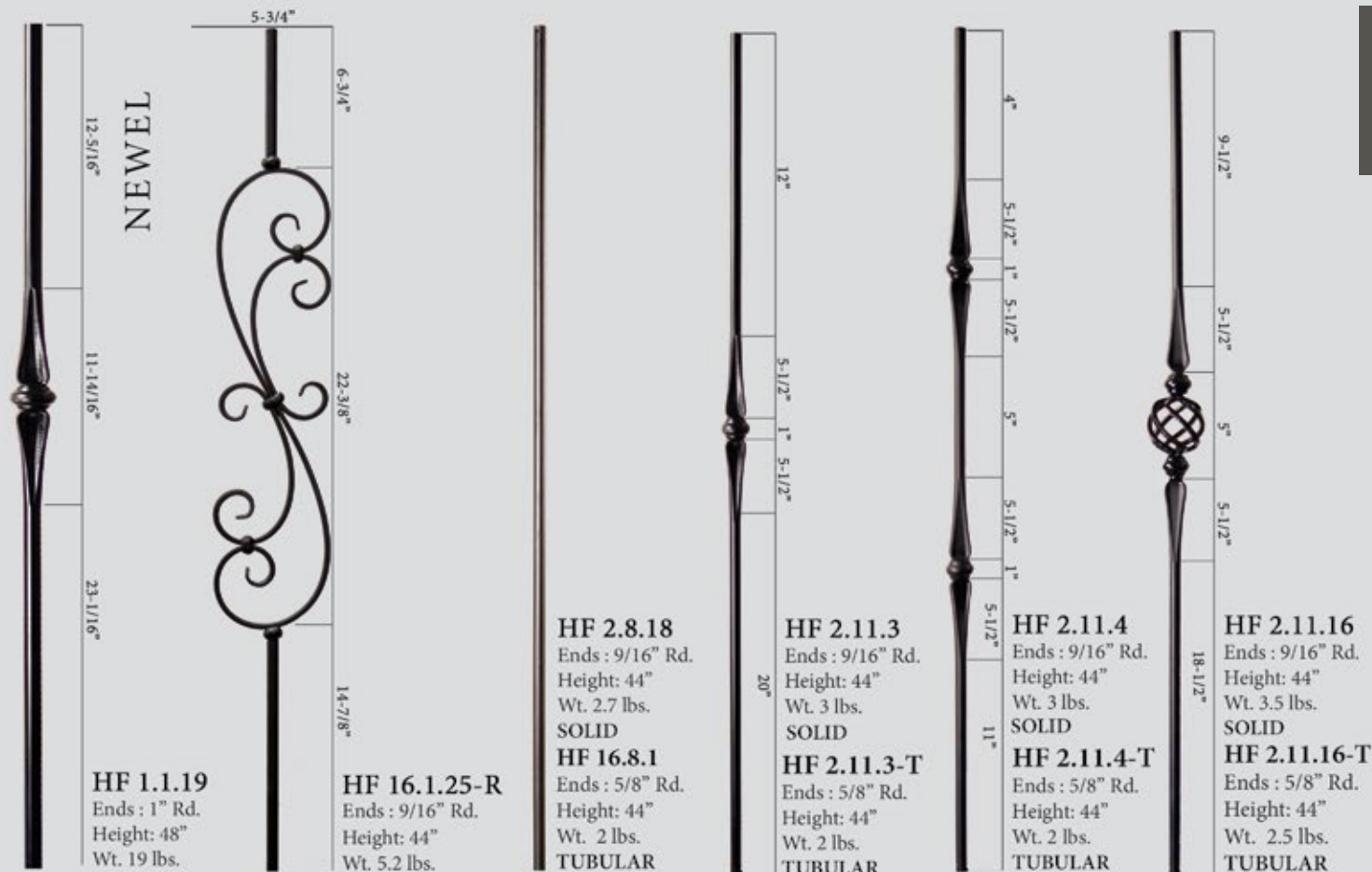


DORADO GOLD
(GD)

NEW

	NEWELS	HF16.5.10	HF16.5.11	HF16.5.11-T	HF1.1.19	BALUSTERS	HF16.2.2	HF16.1.17	HF16.1.18	HF16.1.19	HF16.1.20	HF16.1.25-R	HF2.11.3	HF2.11.3-T	HF2.11.4	HF2.11.4-T	HF2.11.16	HF2.11.16-T	HF2.8.18	HF16.8.1	HF16.8.12	HF16.8.13	HF16.8.14
RAW			•		•							•	•	•	•	•	•	•	•				
STB		•	•		•		•	•	•	•	•	•	•	•	•	•	•	•	•	•	•	•	
CV		•	•				•	•	•	•	•	•											
ORB			•		•							•	•	•	•	•	•	•	•				
AG				•										•		•				•	•	•	
GD																							•





NEW



NEW



NEW



ACCESSORIES

Level base shoes
Level base collars
Angled base shoes
Adjustable level base shoes
Adjustable angled base shoes
Level base shoe, fits 5/8"
Angled base shoe, fits 5/8"
Newel mounting kit

HF16.3.13, HF16.3.26
HF16.3.40, HF16.3.43
HF16.3.16, HF16.3.27
HF16.3.44, HF16.3.46
HF16.3.45, HF16.3.47
HF16.3.35
HF16.3.36
HF16.3.14, HF16.3.33

Photos: L. J.
Photos: K. O.
Photos: M. N.
Photos: R.
Photos: S.
Photos: J.
Photos: N.
Photos: U.

For photos and full accessory details see pages 52-53



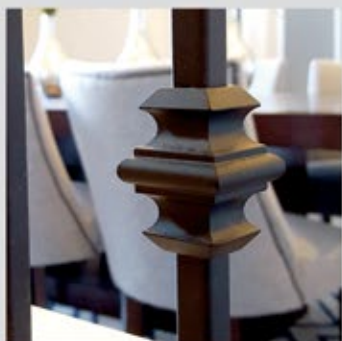


Ash Grey (shown)

The endless baluster combinations in this series offers a match for your individual taste and style. These balusters compliment our Scroll, Twist and Ribbon series.

Silver Vein (shown)

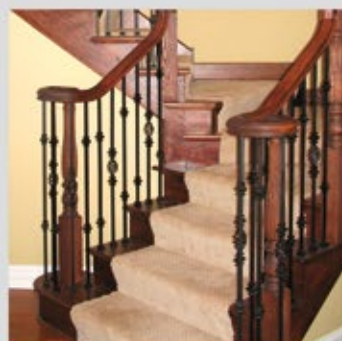
VERSATILE



Satin Black (shown)



Oil Rubbed Bronze (shown)



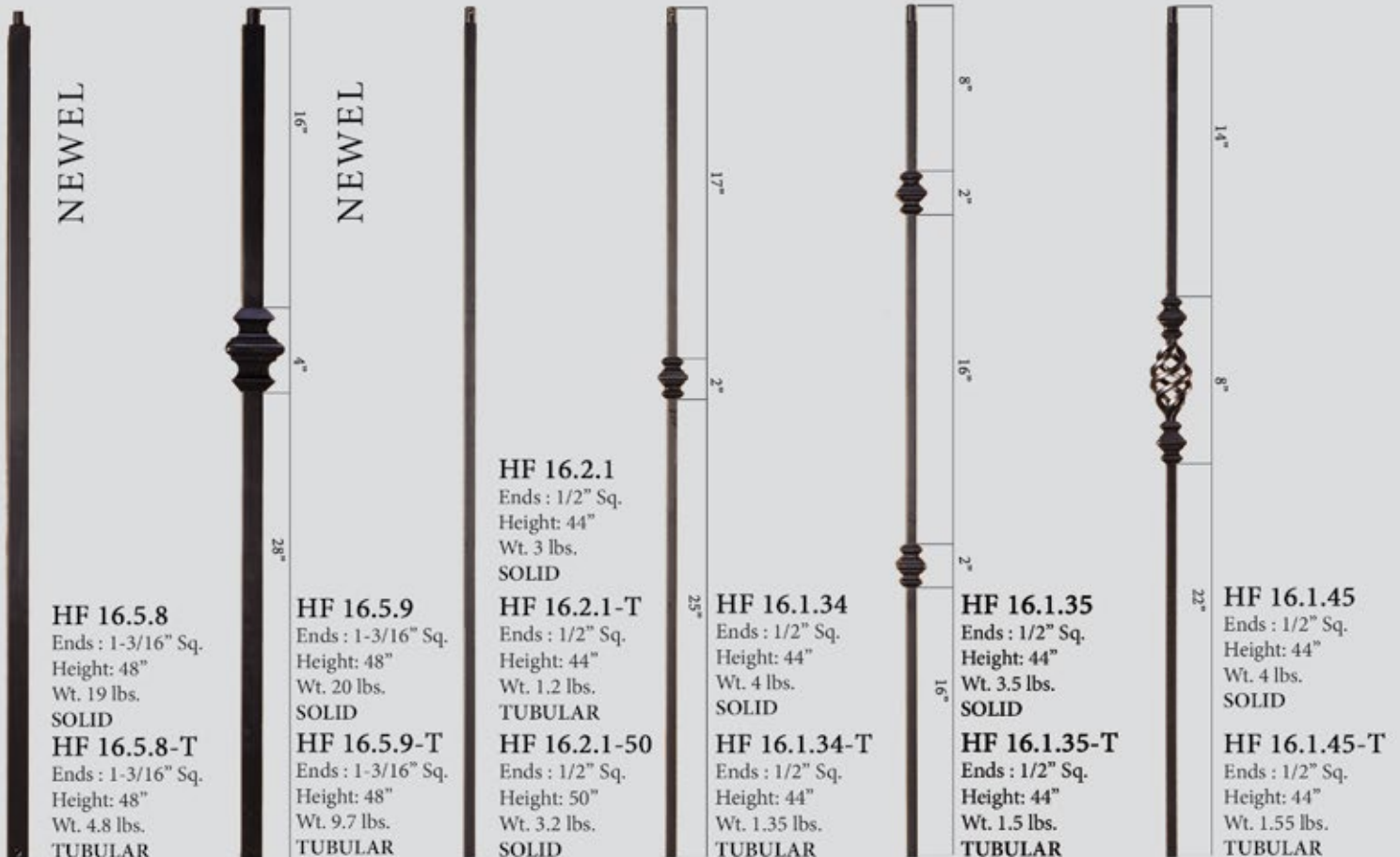
VERSATILE SQUARE



Finishes & Patinas



	NEWELS	HF16.5.8	HF16.5.8-T	HF16.5.9	HF16.5.9-T	BALUSTERS	HF16.2.1	HF16.2.1-T	HF16.2.1-50	HF16.1.34	HF16.1.34-T	HF16.1.35	HF16.1.35-T	HF16.1.45	HF16.1.45-T	HF2.10.1	HF2.2.3	HF16.1.25	HF16.1.25-T	HF16.1.25-S
RAW		•		•			•	•		•	•	•	•				•	•	•	
STB		•		•			•	•	•	•	•	•	•	•	•	•	•	•	•	•
AG			•		•			•			•		•						•	
SP		•		•			•	•		•	•	•	•			•		•	•	
CV		•		•			•	•		•	•	•	•	•	•	•		•	•	
ORB		•		•			•	•		•	•	•	•			•	•	•	•	•
ORC		•		•			•	•		•	•	•	•	•	•	•		•	•	•
AN		•		•			•			•		•		•			•			





HF 2.10.1
Ends : 1/2" Sq.
Height: 44"
Wt. 4.2 lbs.



HF 2.2.3
Ends : 1/2" Sq.
Height: 44"
Wt. 3 lbs.



HF 16.1.25
Ends : 1/2" Sq.
Height: 44"
Wt. 5.2 lbs.
SOLID

HF 16.1.25-T
Ends : 1/2" Sq.
Height: 44"
Wt. 3.85 lbs.
TUBULAR



HF 16.1.25-S
Ends : 1/2" Sq.
Height: 44"
Wt. 5.2 lbs.

ACCESSORIES

Level base shoes
Level base collars
Angled base shoes
Adjustable level base shoes
Adjustable angled base shoes
Versatile style knuckle
Newel mounting kit

HF16.3.1, HF16.3.19, HF16.3.29
HF16.3.4, HF16.3.5,
HF16.3.2, HF16.3.30
HF16.3.44, HF16.3.46
HF16.3.45, HF16.3.47
HF16.5.1
HF16.2.3

Photos: A. A. C.
Photos: D. H.
Photos: E. G.
Photos: R.
Photos: S.
Photos: F.
Photos: T.

For photos and full accessory details see pages 52-53





Satin Black (shown)

The ribbon style twist in this series pairs nicely with balusters from the Scroll and Versatile series. The ribbon is accented nicely by the Oil Rubbed Bronze patina as well as the Copper Vein finish.

Copper Vein (shown)



RIBBON SQUARE



Finishes & Patinas



RAW IRON
(RAW)



SATIN BLACK
(STB)



COPPER VEIN
(CV)



OIL RUBBED
BRONZE
(ORB)



OIL RUBBED
COPPER
(ORC)

	NEWELS	HF16.5.7	BALUSTERS	HF16.1.5	HF16.1.6	HF16.3.6	HF16.3.7	HF16.1.10	HF16.1.11
RAW		•		•	•				
STB		•		•	•	•	•	•	•
CV		•		•	•	•	•	•	•
ORB		•		•	•	•	•	•	•
ORC		•		•	•	•	•	•	•



NEWEL

HF 16.5.7
Ends : 1-3/16" Sq.
Height: 48"
Wt. 19 lbs.



HF 16.1.5
Ends : 1/2" Sq.
Height: 44"
Wt. 3.2 lbs.



HF 16.1.6
Ends : 1/2" Sq.
Height: 44"
Wt. 3 lbs.



HF 16.3.6
Ends : 1/2" Sq.
Height: 44"
Wt. 3.2 lbs.



HF 16.3.7
Ends : 1/2" Sq.
Height: 44"
Wt. 4 lbs.



HF 16.1.10
Ends : 1/2" Sq.
Height: 44"
Wt. 3.6 lbs.



HF 16.1.11
Ends : 1/2" Sq.
Height: 44"
Wt. 4.1 lbs.

ACCESSORIES

Level base shoes
Level base collars
Angled base shoes
Adjustable level base shoes
Adjustable angled base shoes
Versatile style knuckle
Newel mounting kit

HF16.3.1, HF16.3.19, HF16.3.29
HF16.3.4, HF16.3.5,
HF16.3.2, HF16.3.30
HF16.3.44, HF16.3.46
HF16.3.45, HF16.3.47
HF16.5.1
HF16.2.3

Photos: A. A. C.
Photos: D. H.
Photos: E. G.
Photos: R.
Photos: S.
Photos: F.
Photos: T.

For photos and full accessory details see pages 52-53



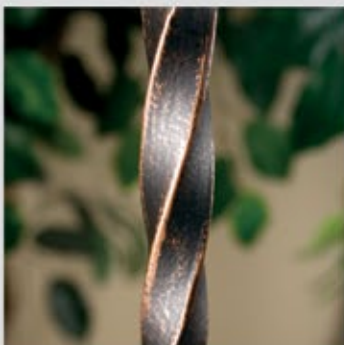


TWIST

Satin Black (shown)

This popular twist and basket design is a mainstay featured in many new homes. These balusters and newels are offered in an extensive range of finishes and patinas. They combine seamlessly with profiles from the Scroll and Versatile series.

Oil Rubbed Copper (shown)



Oil Rubbed Bronze (shown)



Antique Nickel (shown)

TWIST SQUARE



Finishes & Patinas



	NEWELS	HF16.5.4	HF16.5.4-T	HF16.5.5	HF16.5.5-T	BALUSTERS	HF16.1.1	HF16.1.1-T	HF16.1.2	HF16.1.2-T	HF16.1.3	HF16.1.3-T	HF16.1.4	HF16.1.4-T	HF16.1.21	HF16.1.21-T	HF16.1.16	HF16.2.4	HF16.2.5	HF16.2.6	HF16.1.41
RAW		•		•			•	•	•	•	•	•	•	•	•	•		•	•	•	
STB		•		•			•	•	•	•	•	•	•	•	•	•	•	•	•	•	•
AG			•		•			•		•				•		•					
SP		•		•			•	•	•	•	•	•	•	•	•	•	•				
CV		•		•			•	•	•	•	•	•	•	•	•	•	•				
ORB		•		•			•	•	•	•	•	•	•	•	•	•	•				
ORC		•		•			•	•	•	•	•	•	•	•	•	•	•				
AN		•		•			•		•		•		•		•		•				



HF 16.5.4
Ends : 1-3/16" Sq.
Height: 48"
Wt. 18 lbs.
SOLID
HF 16.5.4-T
Ends : 1-3/16" Sq.
Height: 48"
Wt. 5.5 lbs.
TUBULAR



HF 16.5.5
Ends : 1-3/16" Sq.
Height: 48"
Wt. 20 lbs.
SOLID
HF 16.5.5-T
Ends : 1-3/16" Sq.
Height: 48"
Wt. 7.6 lbs.
TUBULAR



HF 16.1.1
Ends : 1/2" Sq.
Height: 44"
Wt. 3 lbs.
SOLID
HF 16.1.1-T
Ends : 1/2" Sq.
Height: 44"
Wt. 1.2 lbs.
TUBULAR



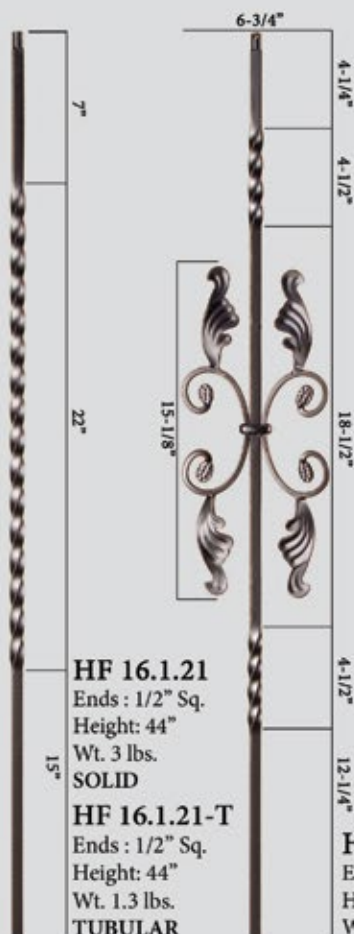
HF 16.1.2
Ends : 1/2" Sq.
Height: 44"
Wt. 3 lbs.
SOLID
HF 16.1.2-T
Ends : 1/2" Sq.
Height: 44"
Wt. 1.15 lbs.
TUBULAR



HF 16.1.3
Ends : 1/2" Sq.
Height: 44"
Wt. 4 lbs.
SOLID
HF 16.1.3-T
Ends : 1/2" Sq.
Height: 44"
Wt. 1.55 lbs.
TUBULAR



HF 16.1.4
Ends : 1/2" Sq.
Height: 44"
Wt. 4 lbs.
SOLID
HF 16.1.4-T
Ends : 1/2" Sq.
Height: 44"
Wt. 1.95 lbs.
TUBULAR



HF 16.1.21

Ends : 1/2" Sq.
Height: 44"
Wt. 3 lbs.
SOLID

HF 16.1.21-T

Ends : 1/2" Sq.
Height: 44"
Wt. 1.3 lbs.
TUBULAR

HF 16.1.16

Ends : 1/2" Sq.
Height: 44"
Wt. 4.5 lbs.



HF 16.2.4

Ends : 1/2" Sq.
Height: 40"
Wt. 3 lbs.



HF 16.2.5

Ends : 1/2" Sq.
Height: 40"
Wt. 3 lbs.



HF 16.2.6

Ends : 1/2" Sq.
Height: 40"
Wt. 3 lbs.



HF 16.1.41

Ends : 1/2" Sq.
Height: 44"
Wt. 7 lbs.

ACCESSORIES

Level base shoes
Level base collars
Angled base shoes
Adjustable level base shoes
Adjustable angled base shoes
Versatile style knuckle
Newel mounting kit

HF16.3.1, HF16.3.19, HF16.3.29

HF16.3.4, HF16.3.5,

HF16.3.2, HF16.3.30

HF16.3.44, HF16.3.46

HF16.3.45, HF16.3.47

HF16.5.1

HF16.2.3

For photos and full accessory details see pages 52-53



Photos: A. A. C.

Photos: D. H.

Photos: E. G.

Photos: R.

Photos: S.

Photos: F.

Photos: T.

ACCESSORY SPECIFICATIONS

Photo	Part #	Description	RAW	STB	AG	SP	CV	ORB	ORC	AN	VB	SC	GD
1/2" Square Baluster Accessories													
A.	HF16.3.1	Level base shoe, fits 1/2" square balusters, 1-5/16" square base, aluminum		•		•	•		•	•			
A.	HF16.3.19	Level base shoe with set screw, fits 1/2" square balusters, 1-5/16" square base, aluminum	•	•	•	•	•	•	•	•			•
E.	HF16.3.2	Angled base shoe with set screw, fits 1/2" square balusters, 1-5/16" base, aluminum	•	•	•	•	•	•	•	•			•
B.	HF16.3.21	Level base shoe with screw mount, fits 1/2" square balusters, 1-9/16" square base, aluminum		•			•						
F.	HF16.5.1	Versatile style knuckle with set screw, fits 1/2" square balusters, 1-7/16" square, aluminum	•	•		•	•	•	•	•			
C.	HF16.3.29	Oil Rubbed Bronze, level base shoe with set screw, fits 1/2" square balusters, 1-1/4" square base, cast iron		•				•					
G.	HF16.3.30	Oil Rubbed Bronze, angled base shoe with set screw, fits 1/2" square balusters, 1-1/4" base, cast iron						•					
D.	HF16.3.4	Level base collar, fits 1/2" square balusters, 2" square base, aluminum, (ORB - cast iron)		•			•	•	•				
H.	HF16.3.5	Level base collar, fits 1/2" square balusters, 1-15/16" round base, aluminum, (ORB - cast iron)		•			•	•	•				
9/16" Square Baluster Accessories													
A.	HF16.3.3	Level base shoe, fits 9/16" square balusters, 1-5/16" square base, aluminum		•			•		•				
A.	HF16.3.20	Level base shoe with set screw, fits 9/16" square balusters, 1-5/16" square base, aluminum		•			•	•	•				
E.	HF16.3.17	Angled base shoe with set screw, fits 9/16" square balusters, 1-5/16" base, aluminum		•			•	•	•				
C.	HF16.3.25	Level base shoe with set screw, fits 9/16" Tuscan square balusters, 1-1/4" square base, cast iron	•	•			•	•			•	•	
G.	HF16.3.28	Angled base shoe with set screw, fits 9/16" Tuscan square balusters, 1-1/4" base, cast iron	•	•			•	•			•	•	
D.	HF16.3.41	Level base collar, fits 9/16" square balusters, 2" square base, cast iron		•			•	•					
H.	HF16.3.42	Level base collar, fits 9/16" square balusters, 1-15/16" round base, cast iron		•				•			•		
5/8" Square Baluster Accessories													
C.	HF16.3.38	Level base shoe with set screw, fits 5/8" square balusters, 1-1/4" square base, cast iron		•				•				•	
G.	HF16.3.39	Angled base shoe with set screw, fits 5/8" square balusters, 1-1/4" base, cast iron		•				•				•	
9/16" Round Baluster Accessories													
I.	HF16.3.13	Level base shoe, fits 9/16" round balusters, 1-5/16" square base, aluminum		•			•						
M.	HF16.3.16	Angled base shoe with set screw, fits 9/16" round balusters, 1-5/16" base, aluminum		•			•						
J.	HF16.3.26	Level base shoe with set screw, fits 9/16" round balusters, 1-1/4" square base, cast iron		•			•	•			•	•	
N.	HF16.3.27	Angled base shoe with set screw, fits 9/16" round balusters, 1-1/4" base, cast iron		•			•	•			•	•	
K.	HF16.3.40	Level base collar, fits 9/16" round balusters, 2" square base, cast iron		•			•	•					
O.	HF16.3.43	Level base collar, fits 9/16" round balusters, 1-15/16" round base, cast iron		•				•			•		
L.	HF17.11.22	Level base collar, fits 9/16" round stainless steel balusters, 1-1/2" round base, stainless steel											
5/8" Round Baluster Accessories													
J.	HF16.3.35	Level base shoe with set screw, fits 5/8" round balusters, 1-1/4" square base, cast iron		•	•		•	•				•	
N.	HF16.3.36	Angled base shoe with set screw, fits 5/8" round balusters, 1-1/4" base, cast iron		•	•		•	•				•	
I.	HF16.3.50	Level base shoe with set screw, fits 5/8" round balusters, 1-5/16" square base, aluminum		•				•					
M.	HF16.3.51	Angled base shoe with set screw, fits 5/8" round balusters, 1-5/16" base, aluminum		•				•					
Adjustable Shoes/Collars have a flexible insert that allows them to be used with either square or round balusters ranging in size from 1/2" to 9/16". Epoxy must be used to permanently secure.													
R.	HF16.3.44	Level base shoe, fits 1/2" - 9/16" square or round balusters, 1-5/16" square base, cast iron		•			•	•			•	•	
R.	HF16.3.46	Level base shoe, fits 1/2" - 9/16" square or round balusters, 1-1/2" square base, cast iron		•			•	•			•	•	
S.	HF16.3.45	Angled base shoe, fits 1/2" - 9/16" square or round balusters, 1-5/16" base, cast iron		•			•	•			•	•	
S.	HF16.3.47	Angled base shoe, fits 1/2" - 9/16" square or round balusters, 1-1/2" base, cast iron		•			•	•			•	•	
P.	HF16.3.24	Level base collar, fits 1/2" - 9/16" square or round balusters, 1-11/16" square base, aluminum		•									
Q.	HF16.3.23	Level base collar, fits 1/2" - 9/16" square or round balusters, 1-11/16" round base, aluminum		•									
Newel Mounting Kits													
T.	HF16.2.3	Newel mounting kit with level base shoe, fits 1-3/16" square newels, 3-1/8" square base, cast iron	•	•	•	•	•	•	•	•			•
T.	HF16.3.31	Newel mounting kit with level base shoe, fits 1" square newels, 3-1/8" square base, cast iron	•	•			•	•			•	•	
U.	HF16.3.14	Newel mounting kit with level base shoe, fits 1-3/16" round newels, 3-1/8" square base, cast iron	•	•	•		•						
U.	HF16.3.33	Newel mounting kit with level base shoe, fits 1" round newels, 3-1/8" square base, cast iron	•	•	•		•	•			•	•	
V.	HF17.2.3	Newel mounting kit with level base collar, fits 1-3/16" round stainless steel newels, 3-1/4" round base, stainless steel											
Handrail Brackets													
W.	HF3002	Handrail bracket, 1-1/4" x 2-3/8" mounting plate, extends out 3" from wall, aluminum Also available in Brushed Chrome HFBC3002, Polished Brass HFPP3002		•	•	•	•	•	•			•	
X.	HF3003	Handrail bracket, 2-1/16" round mounting plate, extends out 3" from wall, aluminum Also available in Chrome HFCE3003, Brushed Chrome HFBC3003, Nickel HFNL3003		•	•	•	•	•	•	•	•	•	

ACCESSORY PROFILES



Forged Panels

**House of Forgings
is dedicated to
providing superior
products that meet the
highest standards of
architects,
homebuilders
and homeowners.**

We are pleased to provide a full line of prefabricated ornamental iron components. These elegant products allow for the look and feel of a fully custom fabricated iron stair or railing system. In addition to cost savings, installation time is greatly reduced compared to traditional fabrication.

STAIR & RAILING PRODUCTS BY





Rebecca panels paired with
Monte Carlo balusters (shown)

REBECCA

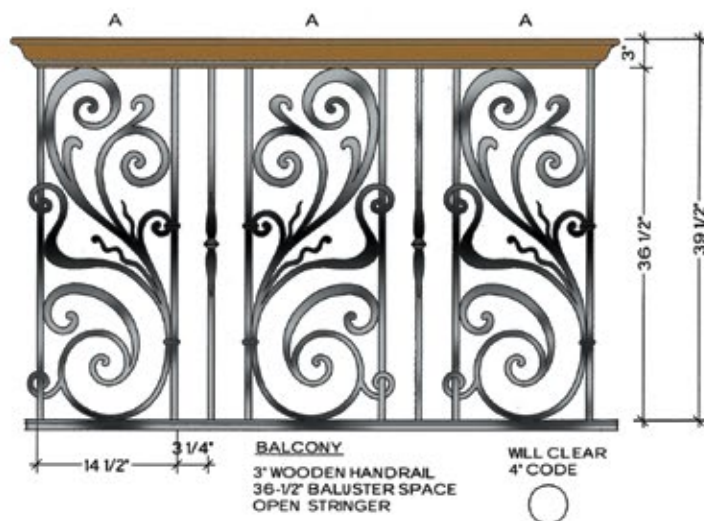
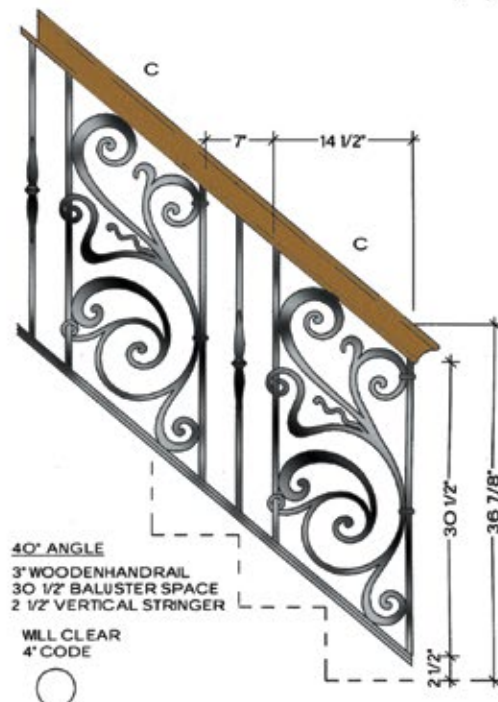


Rebecca HFRB.B1 (shown)

5/8" ROUND
IRON



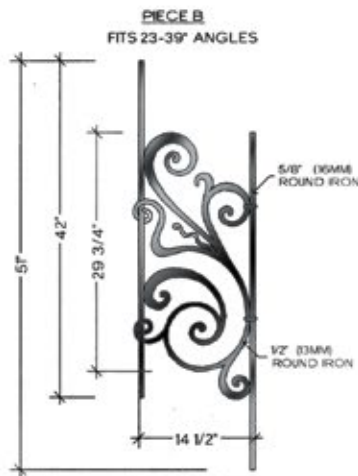
1/2" ROUND
IRON



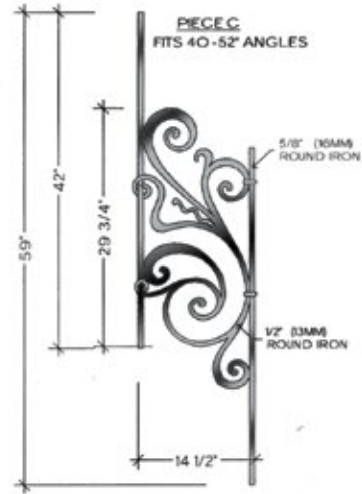
REBECCA



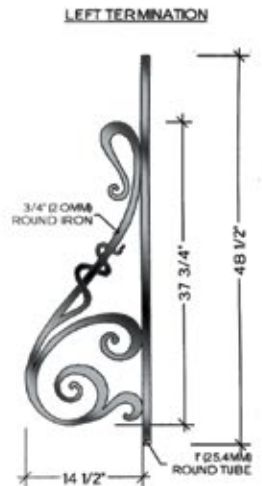
TOP VIEW
A-1 **FLAT**
HFRB.A1



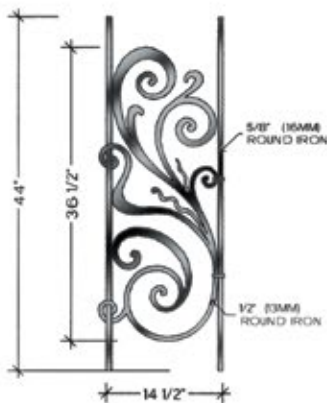
TOP VIEW
B-1 **FLAT**
HFRB.B1



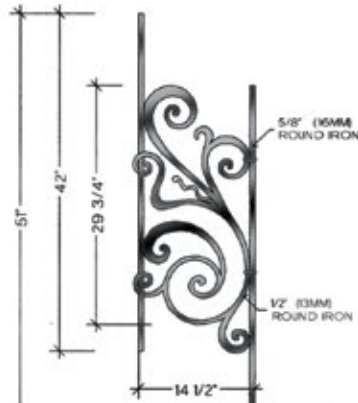
TOP VIEW
C-1 **FLAT**
HFRB.C1



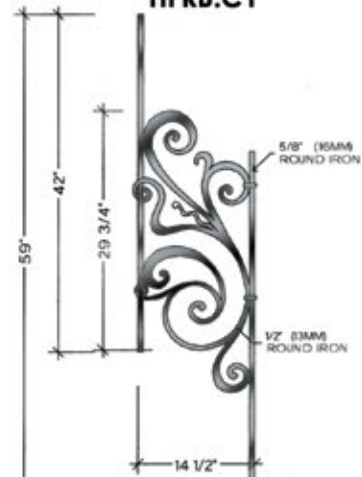
TOP VIEW
4 1/2" RADIUS
HFRB.TERM LF



TOP VIEW
A-2
ALL RADIUS FROM 28" TO 20'-0"
HFRB.A2



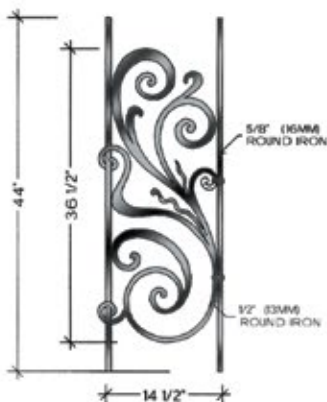
TOP VIEW
B-2
ALL RADIUS FROM 30" TO 20'-0"
HFRB.B2



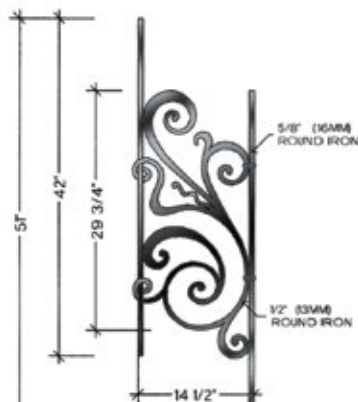
TOP VIEW
C-2
ALL RADIUS FROM 30" TO 20'-0"
HFRB.C2



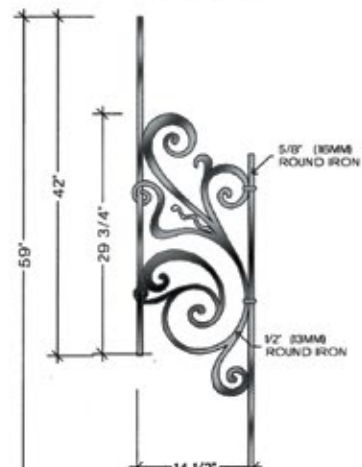
TOP VIEW
4 1/2" RADIUS
HFRB.TERM RT



TOP VIEW
A-3
ALL RADUS FROM 28" TO 20'-0"
HFRB.A3



TOP VIEW
B-3
ALL RADUS FROM 30" TO 20'-0"
HFRB.B3



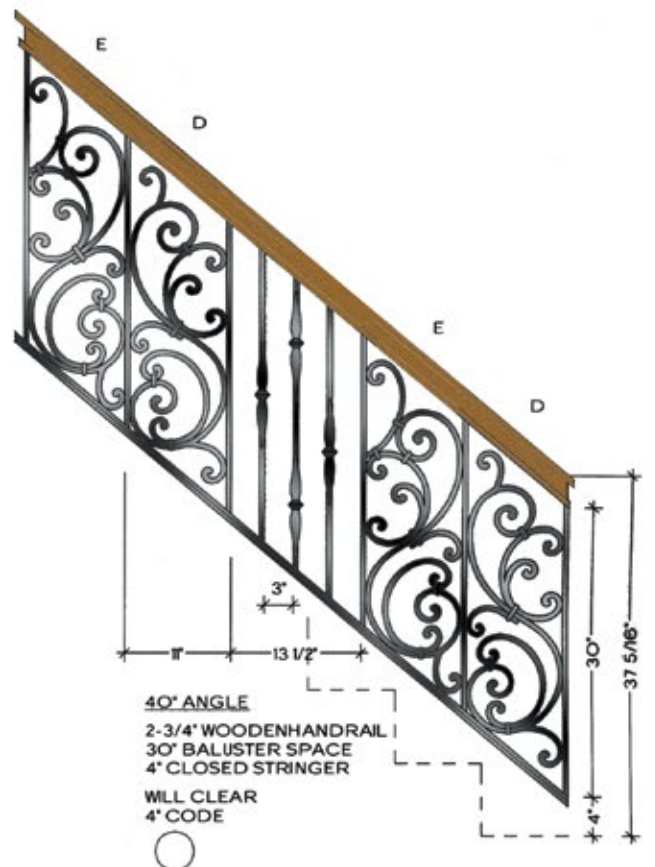
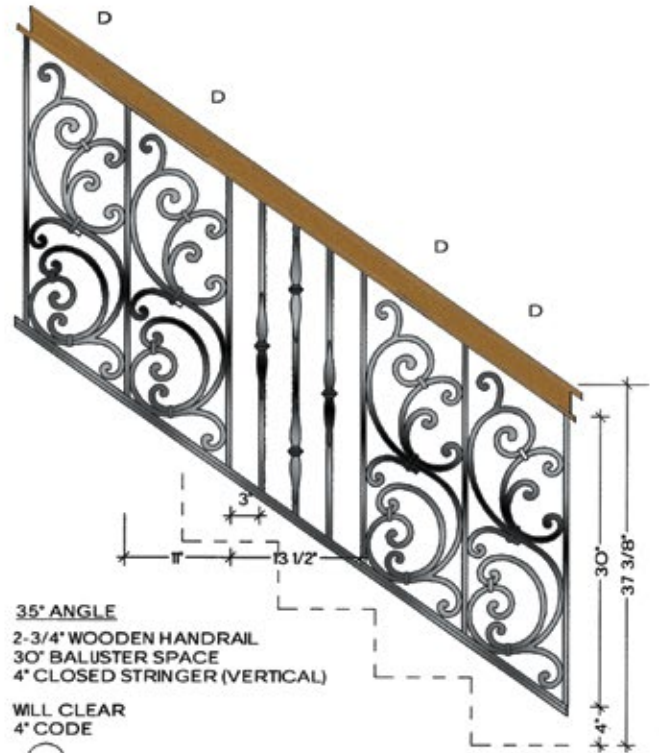
TOP VIEW
C-3
ALL RADUS FROM 30" TO 20'-0"
HFRB.C3

TUSCANY

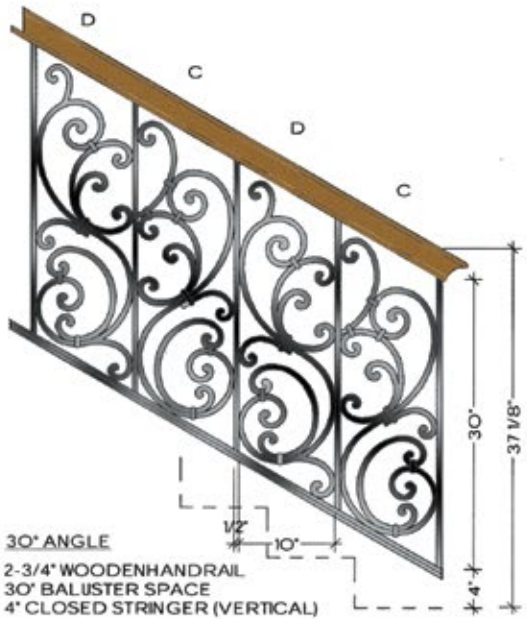


Tuscany HFTU.A1 (shown)

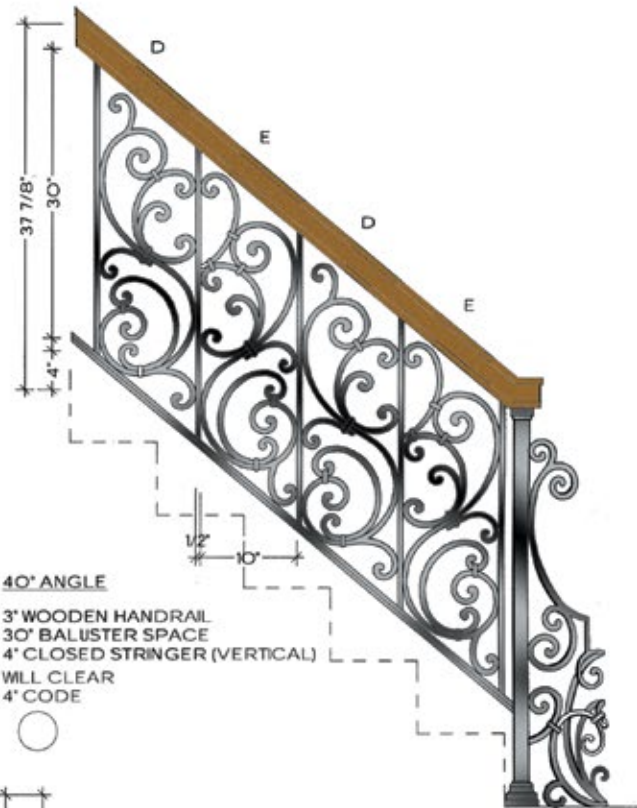
1/2" SQUARE
IRON



TUSCANY



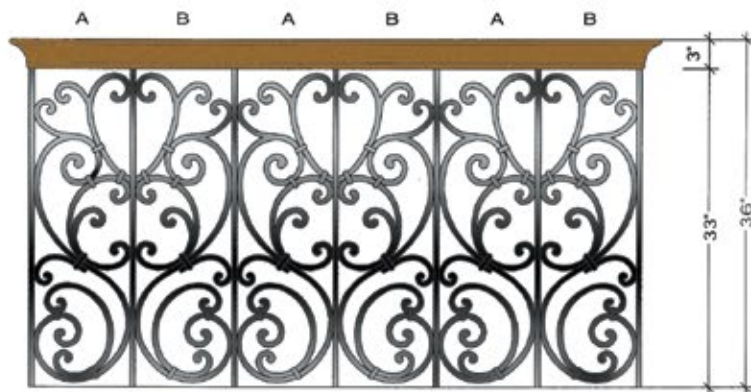
WILL CLEAR
4" CODE



40° ANGLE

3" WOODEN HANDRAIL
30" BALUSTER SPACE
4" CLOSED STRINGER (VERTICAL)
WILL CLEAR
4" CODE

RIGHT TERMINATION
LEFT SIDE VIEW

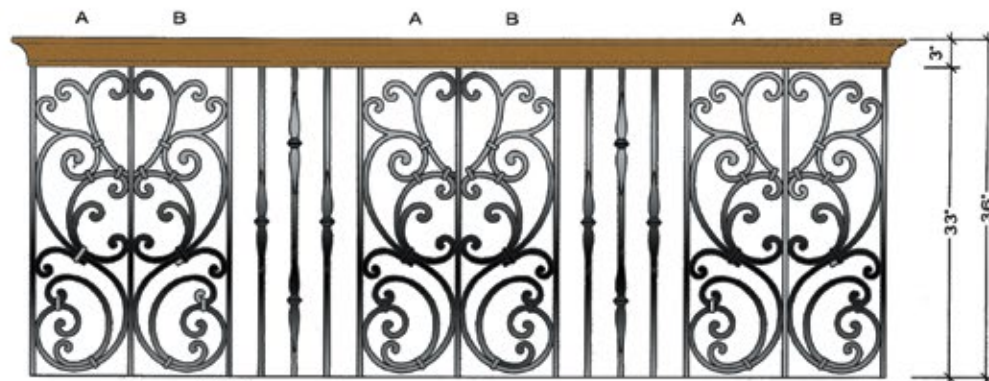


1/2" 10"

BALCONY

3" WOODEN HANDRAIL
33" BALUSTER SPACE

WILL CLEAR
4" CODE



1/2" 10" 1/2" 3"

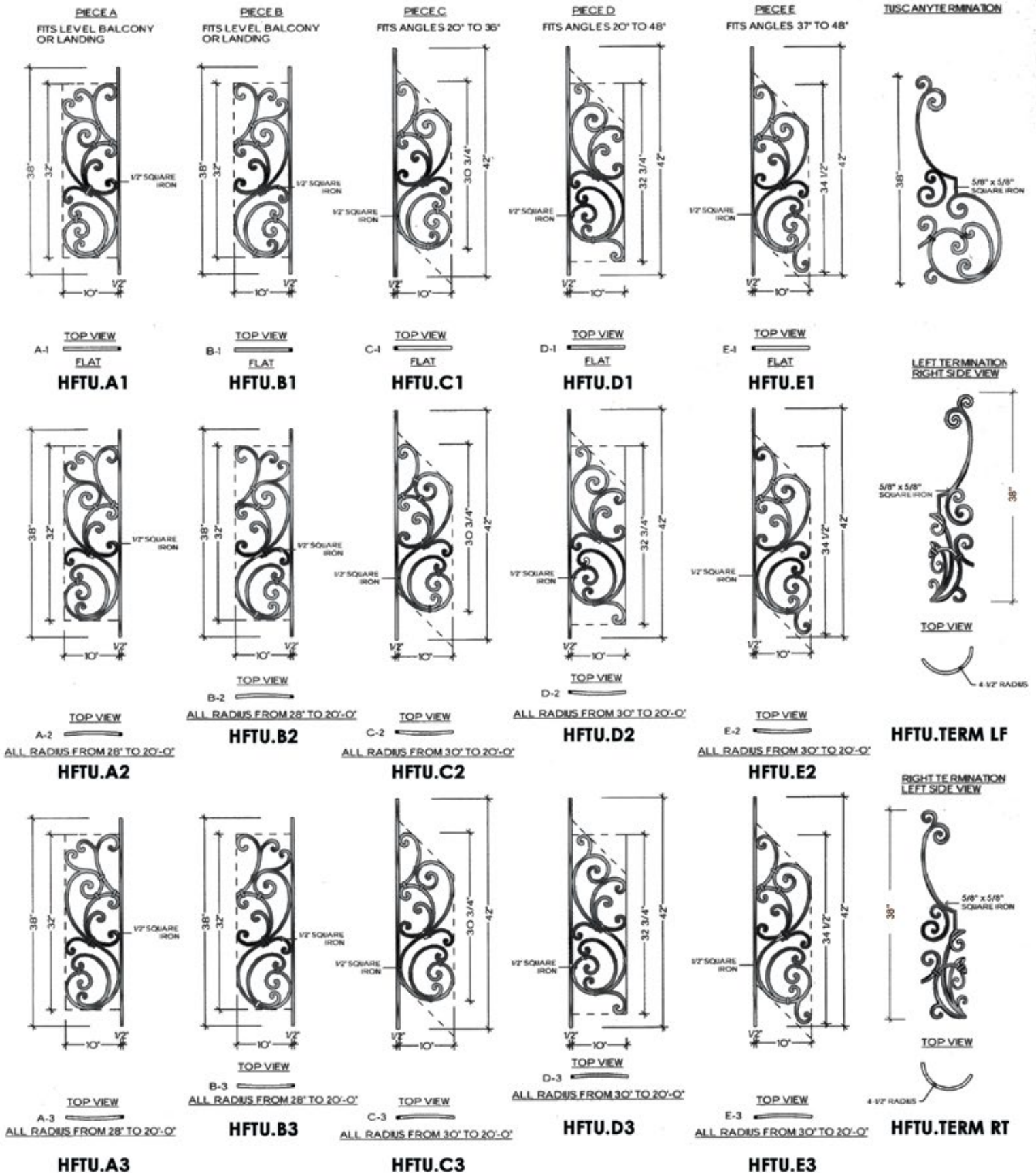
14 1/2"

BALCONY

3" WOODEN HANDRAIL
33" BALUSTER SPACE

WILL CLEAR
4" CODE

TUSCANY



All panels are stocked in primed black, powdercoating or faux painting is available by special order

U.S. Pat. No. 5,820,111 & No. 6,059,269



Tuscany panels paired with
Gothic balusters (shown)

SEVILLE

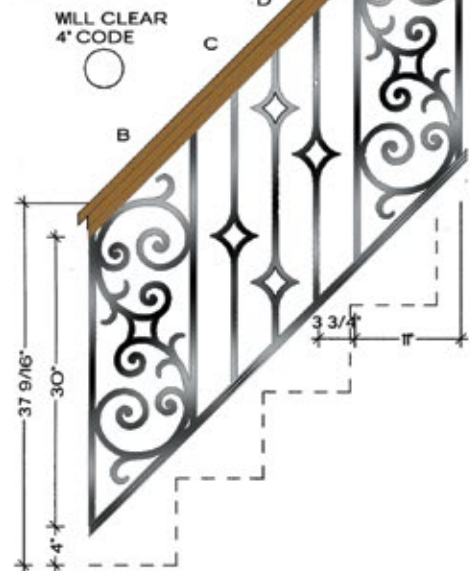


Seville HFSE.A1 (shown)

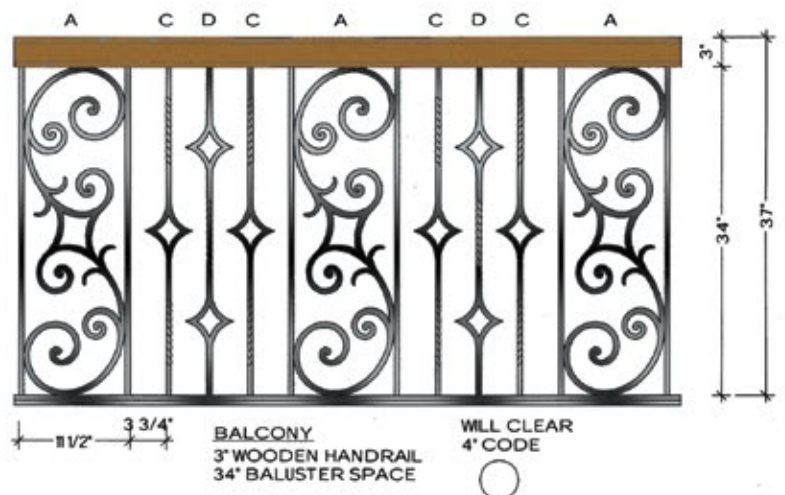
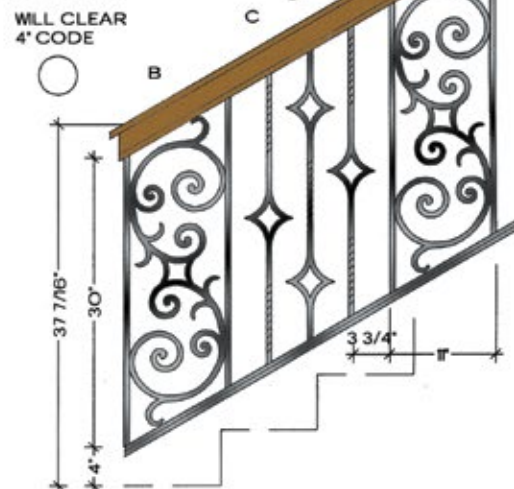
1/2" SQUARE
IRON



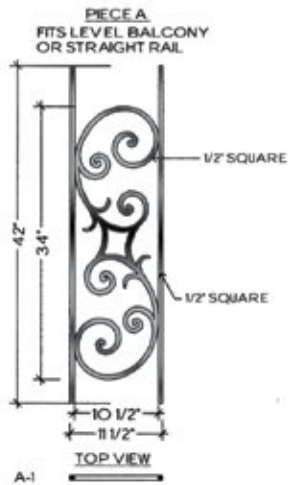
45° ANGLE
2-1/2" WOODEN HANDRAIL
30" BALUSTER SPACE
4" VERTICAL STRINGER



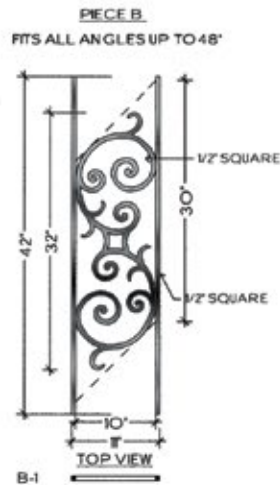
30° ANGLE
3" WOODEN HANDRAIL
30" BALUSTER SPACE
4" VERTICAL STRINGER



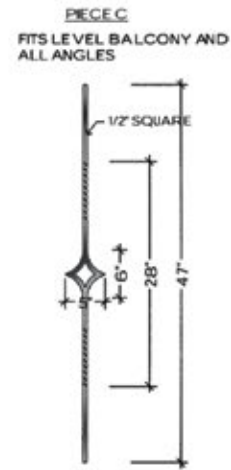
SEVILLE



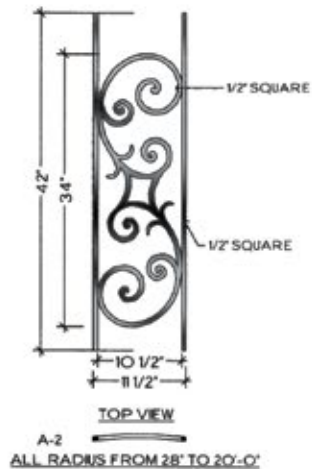
HFSE.A1



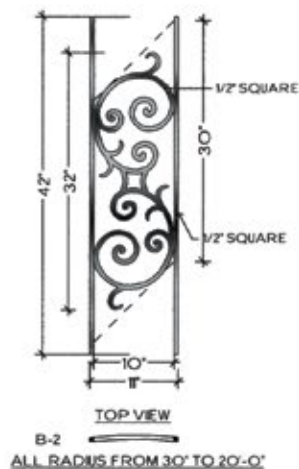
HFSE.B1



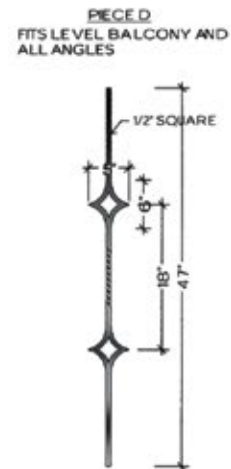
HFSE.C



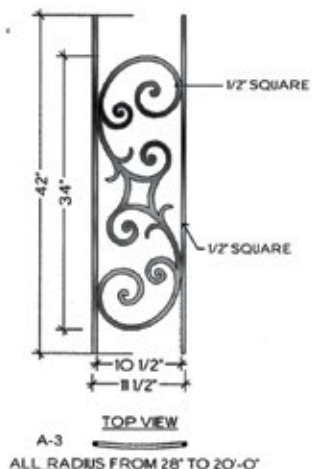
HFSE.A2



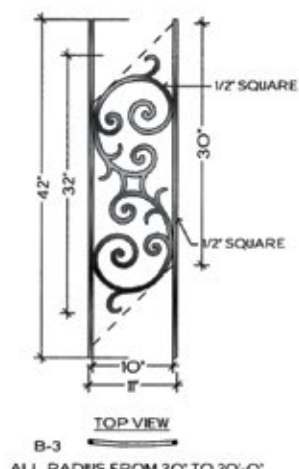
HFSE.B2



HFSE.D



HFSE.A3



HFSE.B3

MILANO

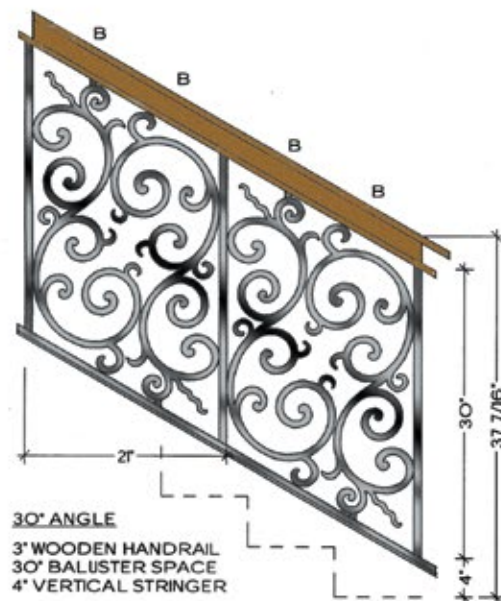


Milano HFMO.A1 (shown)

3/4" SQUARE
TUBE

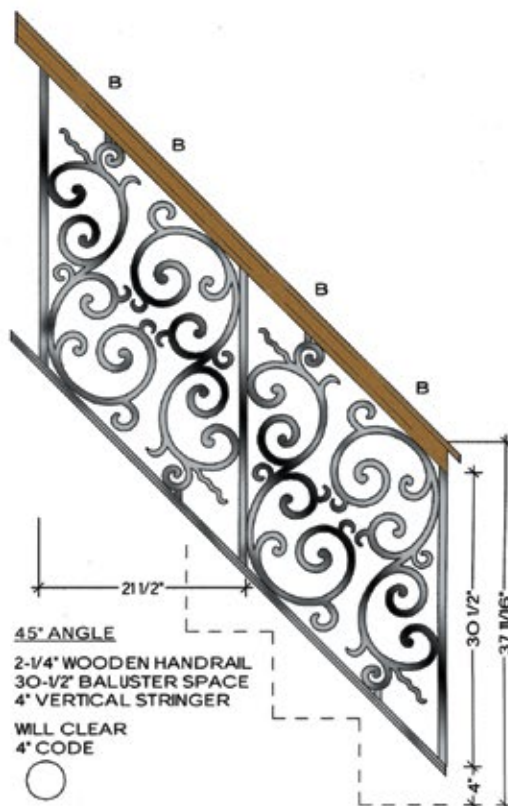


1/2" SQUARE
IRON



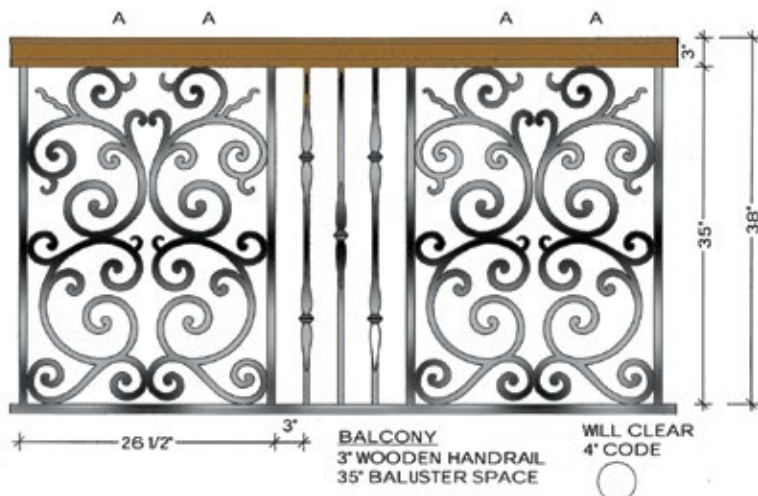
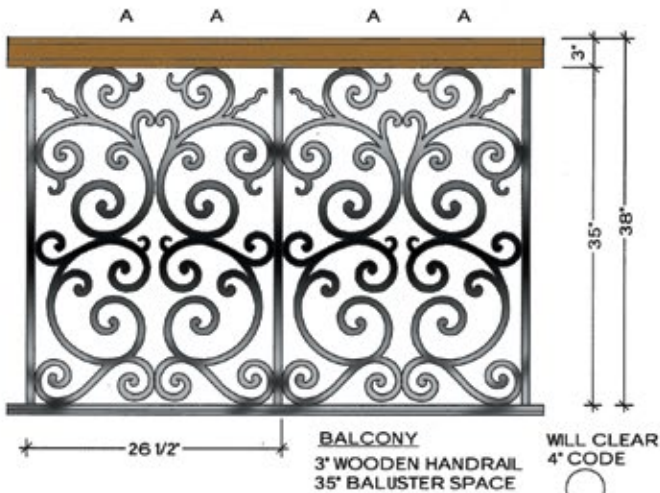
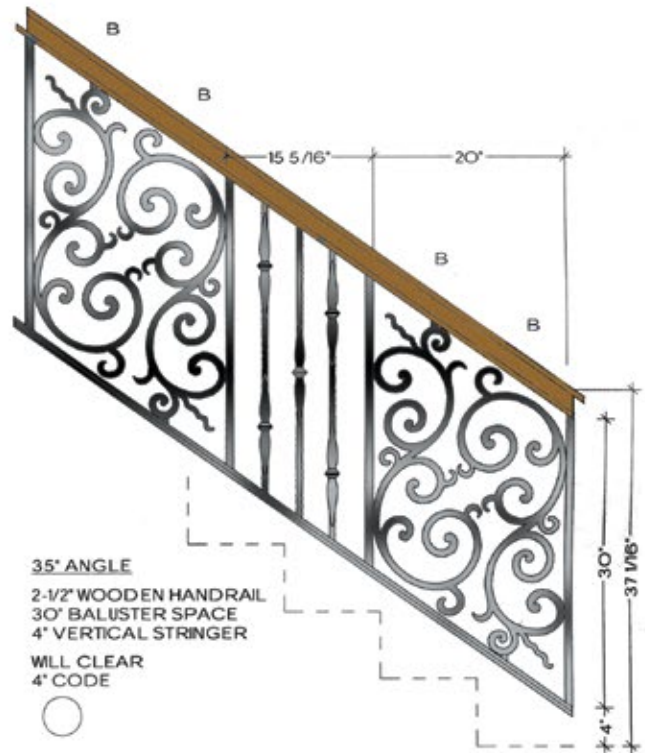
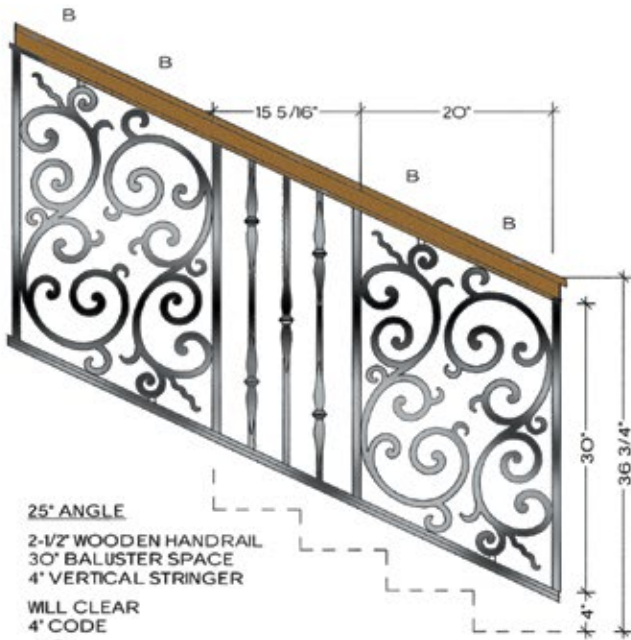
WILL CLEAR
4" CODE

"NOTE: THE MILANO LAYOUT
REQUIRES THE REMOVAL OF
SOME ATTACHED VERTICALS
AND REWELDING SCROLLS TO
PREVIOUS VERTICAL"



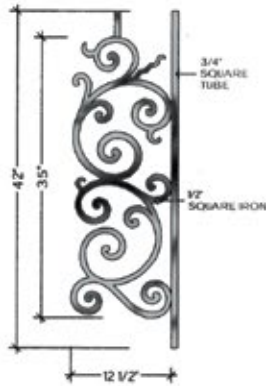
WILL CLEAR
4" CODE

MILANO



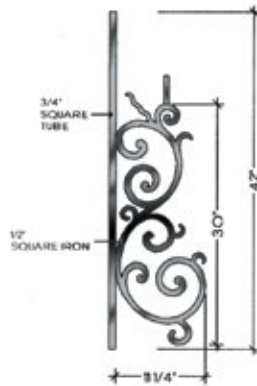
MILANO

PIECE A
FITS LEVEL BALCONY OR
LANDING



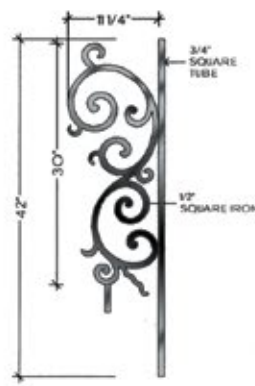
TOP VIEW
A-1
FLAT
HFMO.A1

PIECE B
FITS ALL ANGLES UP TO 48°



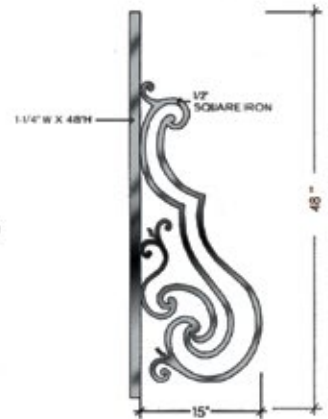
TOP VIEW
B-1
FLAT
HFMO.B1

PIECE B
FITS ALL ANGLES UP TO 48°



TOP VIEW
B-1
FLAT
HFMO.B1

TERMINATION



LEFT TERMINATION
RIGHT SIDE VIEW

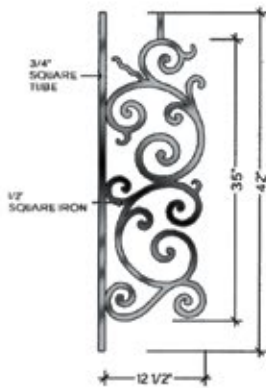


HFMO.TERM LF

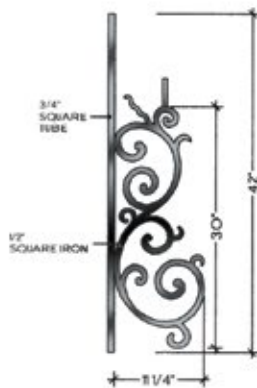
RIGHT TERMINATION
LEFT SIDE VIEW



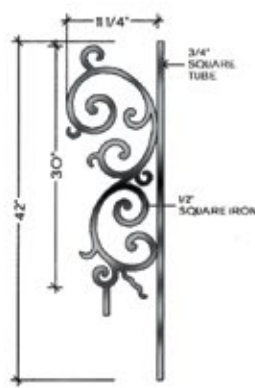
HFMO.TERM RT



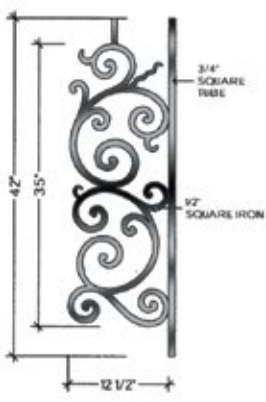
TOP VIEW
A-2
ALL RADII FROM 28" TO 20'-0"
HFMO.A2



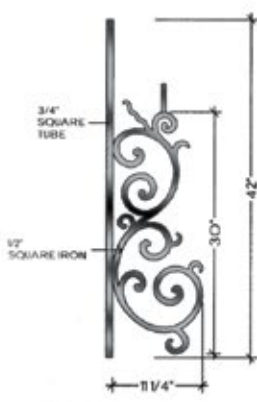
TOP VIEW
B-2
ALL RADII FROM 30" TO 20'-0"
HFMO.B2



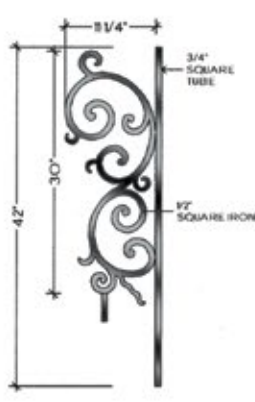
TOP VIEW
B-2
ALL RADII FROM 30" TO 20'-0"
HFMO.B2



TOP VIEW
A-3
ALL RADII FROM 28" TO 20'-0"
HFMO.A3



TOP VIEW
B-3
ALL RADII FROM 30" TO 20'-0"
HFMO.B3



TOP VIEW
B-3
ALL RADII FROM 30" TO 20'-0"
HFMO.B3



BORDEAUX

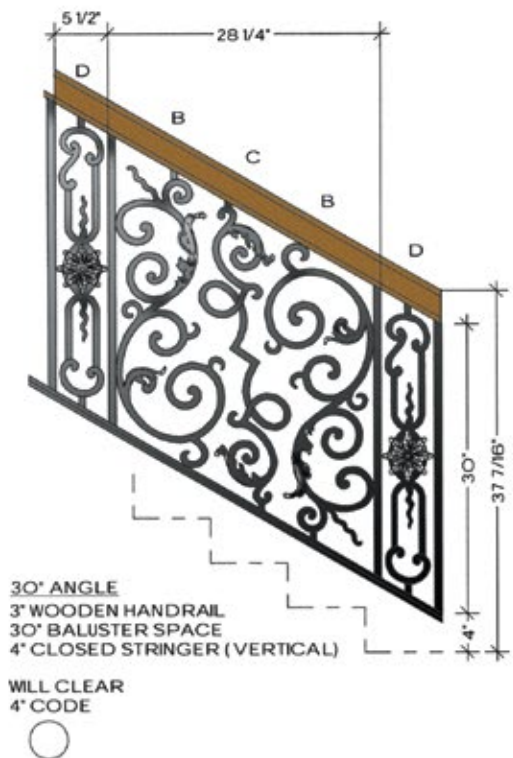
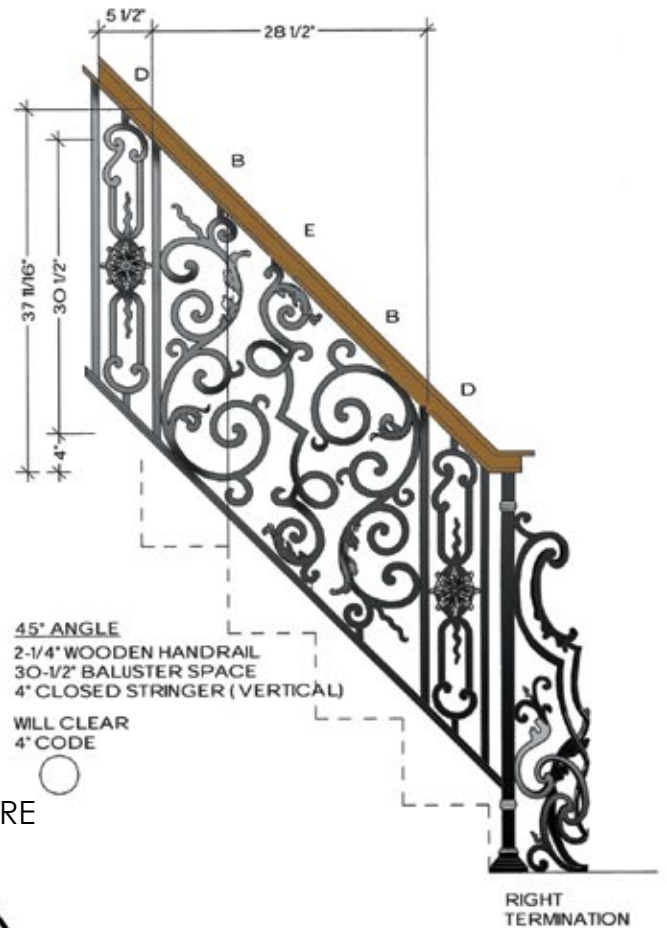


Bordeaux HFBX.A1 (shown)

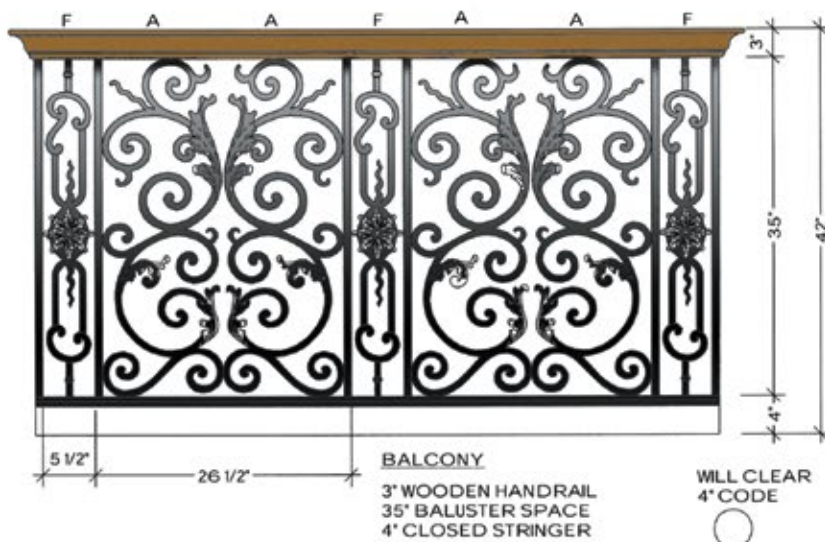
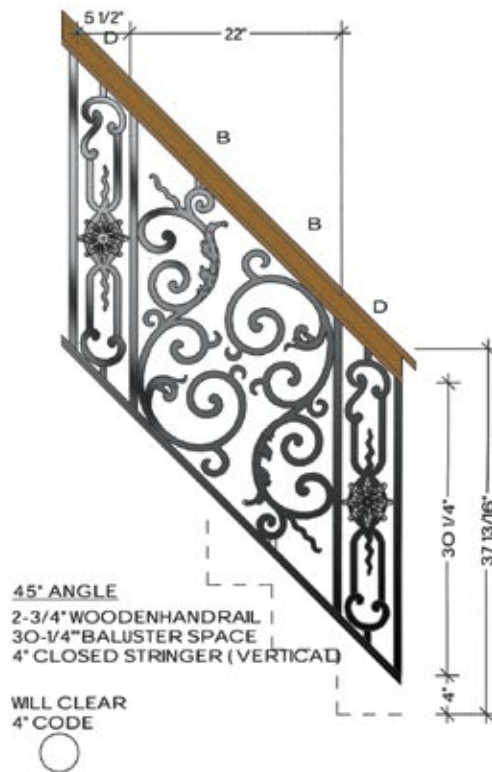
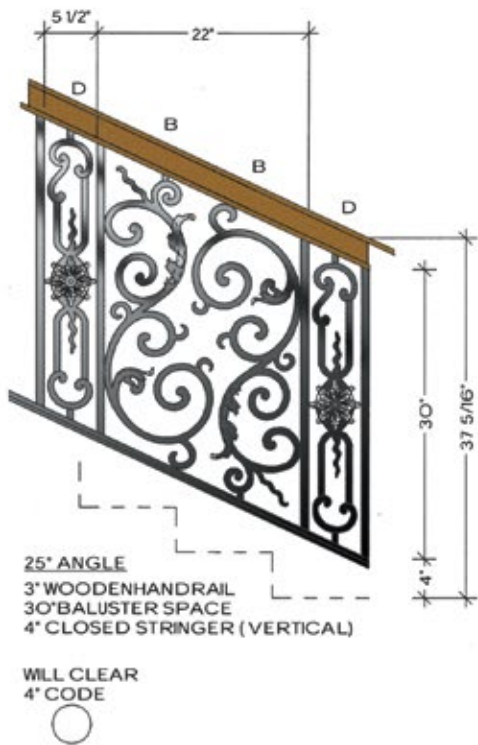
3/4" SQUARE
TUBE



5/8" SQUARE
IRON

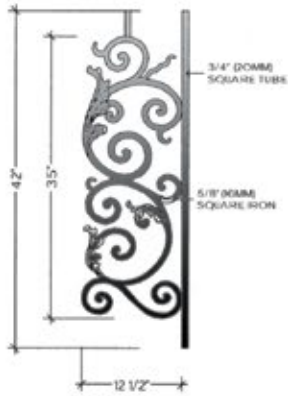


BORDEAUX



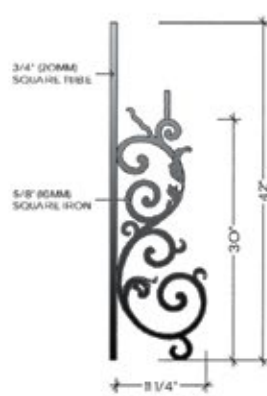
BORDEAUX

PIECE A
FITS LEVEL BALCONY OR
STRAIGHT RAILS



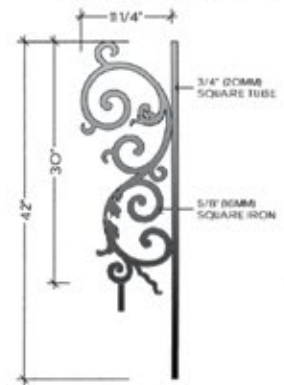
TOP VIEW
A-1 **FLAT**
HFBX.A1

PIECE B
FITS ALL ANGLES UP TO 48°

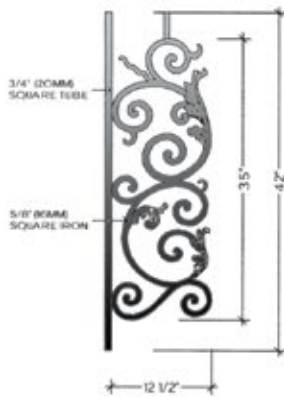


TOP VIEW
B-1 **FLAT**
HFBX.B1

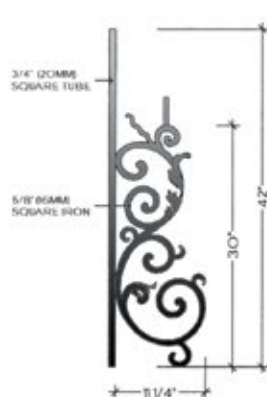
PIECE B
FITS ALL ANGLES UP TO 48°



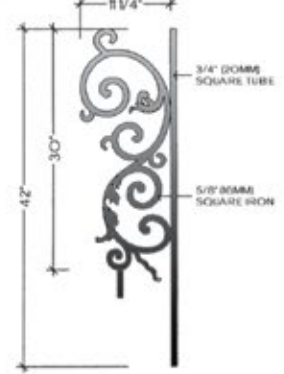
TOP VIEW
B-1 **FLAT**
HFBX.B1



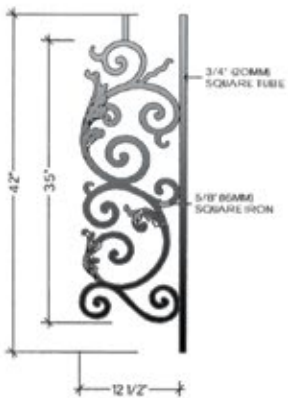
TOP VIEW
A-2
HFBX.A2
ALL RADIUS FROM 28" TO 20'-0"



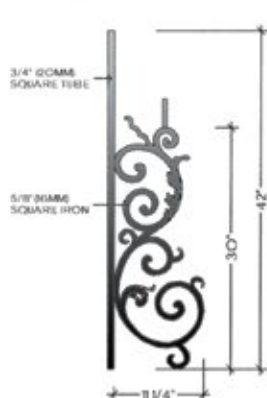
TOP VIEW
B-2
HFBX.B2
ALL RADIUS FROM 30" TO 20'-0"



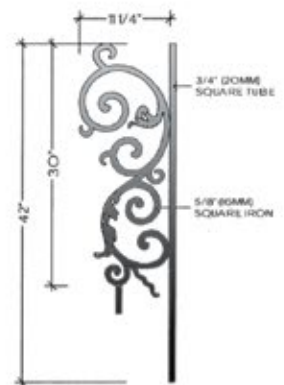
TOP VIEW
B-2
HFBX.B2
ALL RADIUS FROM 30" TO 20'-0"



TOP VIEW
A-3
HFBX.A3
ALL RADIUS FROM 28" TO 20'-0"



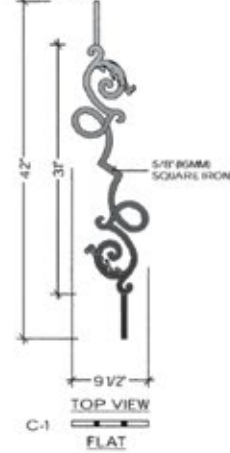
TOP VIEW
B-3
HFBX.B3
ALL RADIUS FROM 30" TO 20'-0"



TOP VIEW
B-3
HFBX.B3
ALL RADIUS FROM 30" TO 20'-0"

BORDEAUX

PIECE C
FITS ONLY INCLINE ANGLES
BELOW 40°



HFBX.C1

PIECE D
FITS ALL ANGLES



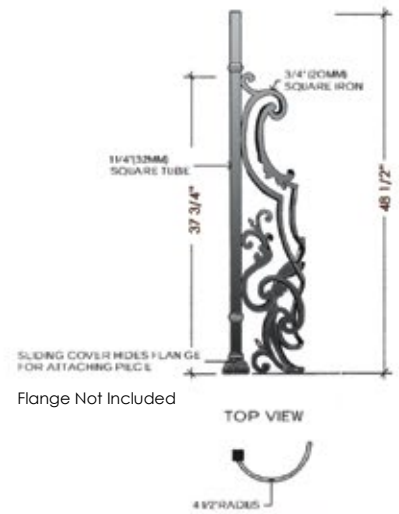
HFBX.D

PIECE E
FITS ONLY ANGLES ABOVE 40°



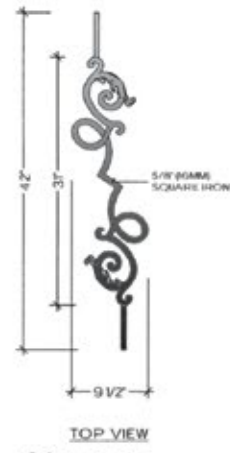
HFBX.E1

RIGHT TERMINATION
INSIDE VIEW

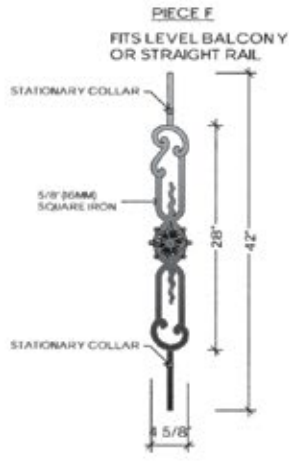


Flange Not Included

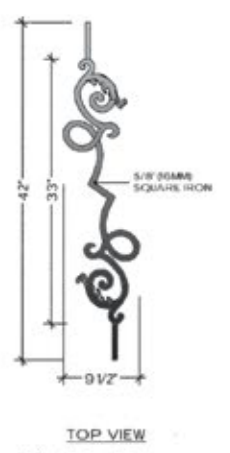
HFBX.TERM RT



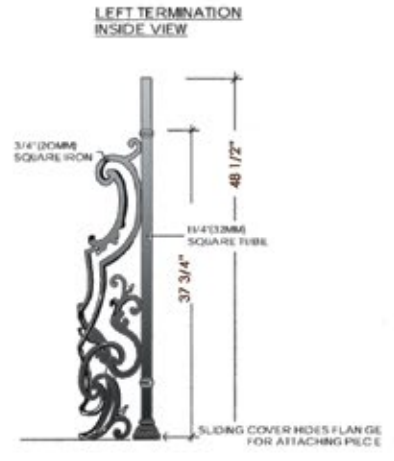
HFBX.C2



HFBX.F



HFBX.E2

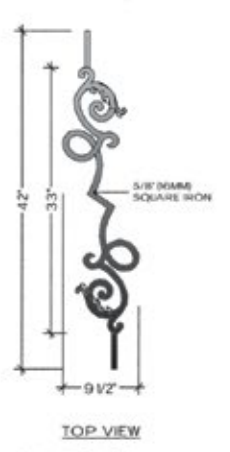


Flange Not Included

HFBX.TERM LF



HFBX.C3



HFBX.E3

REGENCY

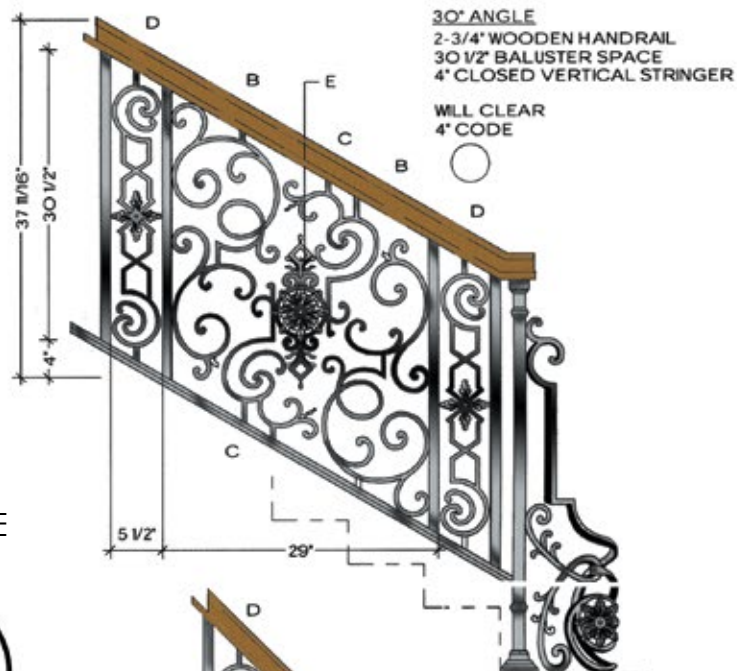


Regency HFREA1 (shown)

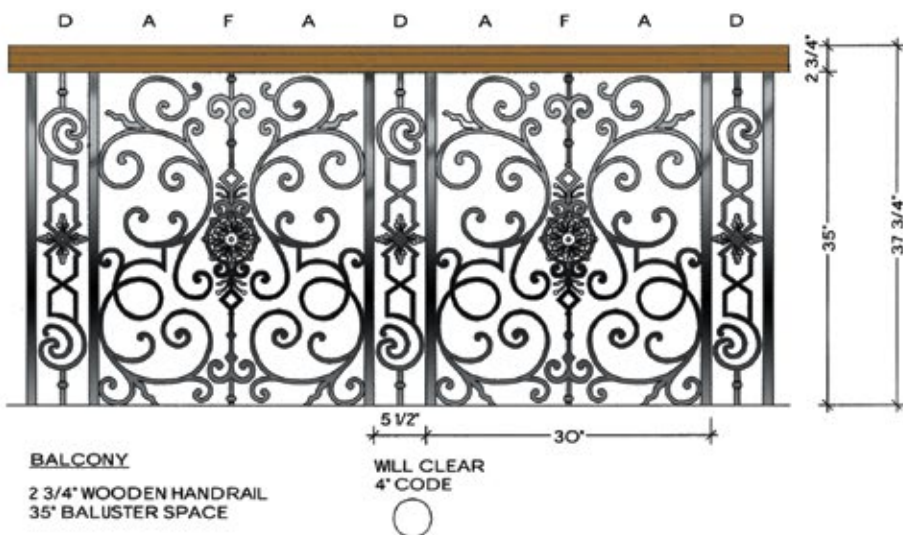
1" SQUARE
TUBE



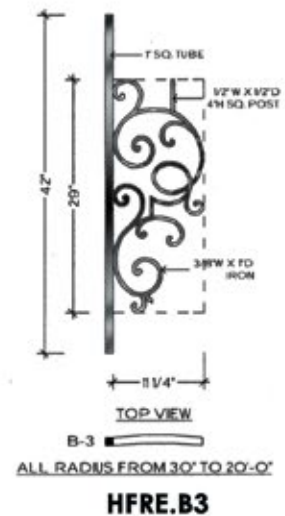
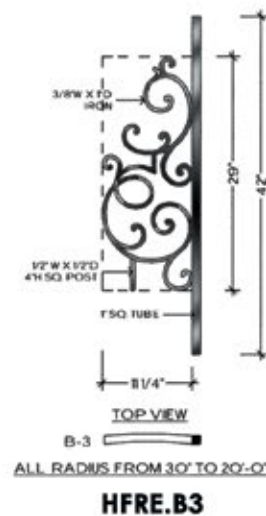
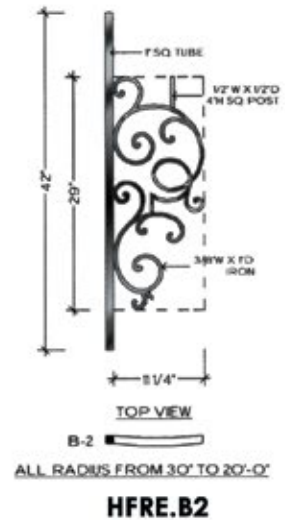
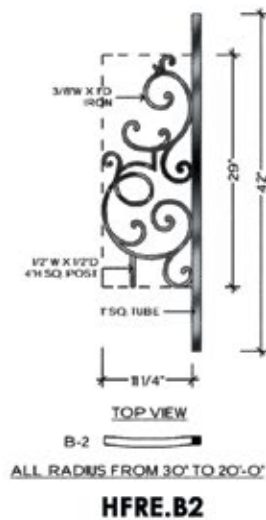
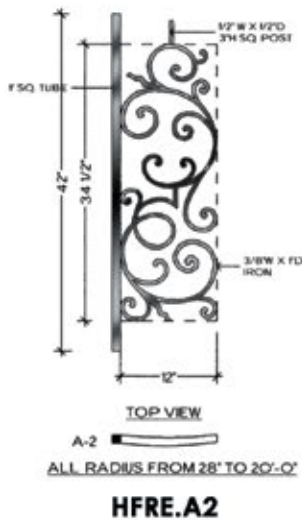
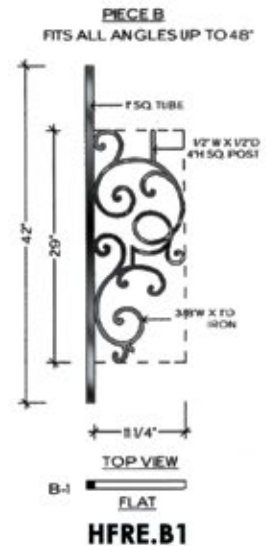
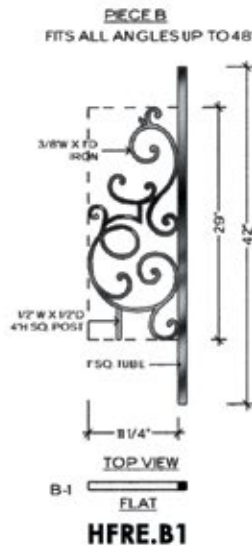
3/8" X 1"
FLAT IRON



RIGHT REGENCY
TERMINATION

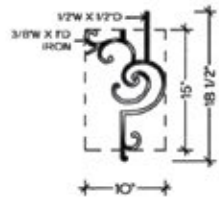


REGENCY

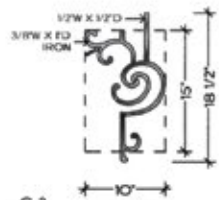


REGENCY

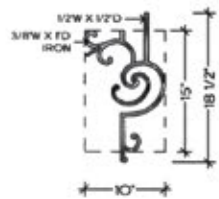
PIECE C
FITS ALL ANGLES UP TO 48°



TOP VIEW
C-1
FLAT
HFRE.C1



TOP VIEW
C-2
ALL RADIUS FROM 30° TO 20°-0'
HFRE.C2



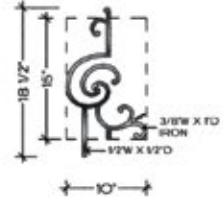
TOP VIEW
C-3
ALL RADIUS FROM 30° TO 20°-0'
HFRE.C3

PIECE D
FITS ALL ANGLES & LEVEL BALCONY

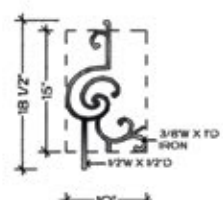


TOP VIEW
FLAT
HFRE.D

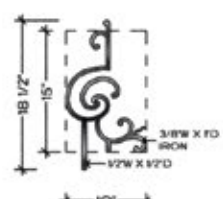
PIECE C
FITS ALL ANGLES UP TO 48°



TOP VIEW
C-1
FLAT
HFRE.C1

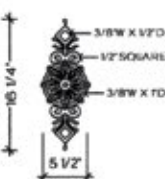


TOP VIEW
C-2
ALL RADIUS FROM 30° TO 20°-0'
HFRE.C2



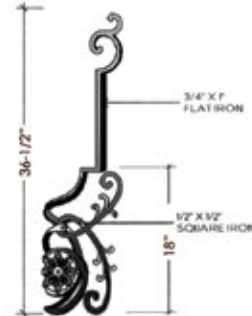
TOP VIEW
C-3
ALL RADIUS FROM 30° TO 20°-0'
HFRE.C3

PIECE E
FITS ALL ANGLES



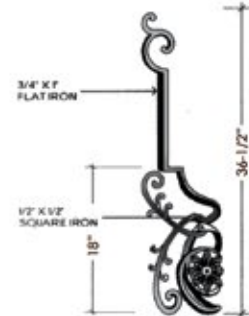
HFRE.E

LEFT SIDE TERMINATION
RIGHT SIDE VIEW

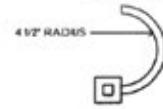
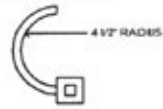


HFRE.TERM LF

RIGHT SIDE TERMINATION
LEFT SIDE VIEW



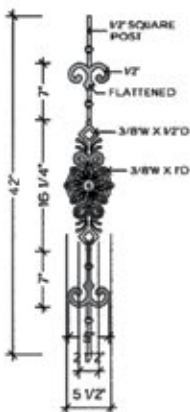
HFRE.TERM RT



TERMINATION



PIECE F
FITS LEVEL BALCONY OR STRAIGHT RAIL



TOP VIEW
FLAT
HFRE.F



U.S. Pat.
No. 5,820,111
No. 6,059,269

Regency panels (shown)

Regency[©] 75

Wood Products

**At House of Forgings
we provide much
more than just forged
iron products, we
boast an extensive
line of wood
components
as well.**

From handrails to treads, we carry virtually all components necessary to create the staircase or balcony you have envisioned. All products are stocked in Red Oak or Paint Grade, ready for immediate shipping. Components are packaged and shipped with the utmost integrity ensuring that your order will arrive on time and undamaged.

STAIR & RAILING PRODUCTS BY



**HOUSE OF
FORGINGS**



Elegante-Column newels (RO-4480/RO-4485)
paired with Twist/Scroll balusters (shown)

BLANKS



Prefinished white

4923-41

HT. 41"
W = 1-3/4"

4913-41

HT. 41"
W = 1-1/4"

CLASSIC



CLASSIC

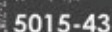
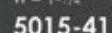
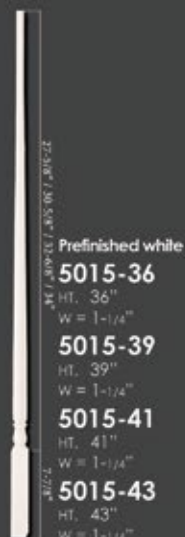
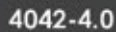
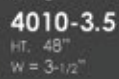


All newels stocked in Red Oak (RO), all balusters stocked in prefinished white (PG)

REMINGTON



MAGNOLIA



CONCORD



ELEGANTE-COLUMN



4480
HT. 56"
W = 5-1/2"



4485-5
HT. 56"
W = 3-1/4"



4485
HT. 48"
W = 3-1/4"

ELEGANTE-TWIST



4440
HT. 56"
W = 5-1/2"



4450-5
HT. 56"
W = 3-1/4"



4450
HT. 48"
W = 3-1/4"

All Elegante newels and balusters stocked in Red Oak (RO)

BOX NEWELS



Contemporary
Box Newel
4191
HT. 56"
W = 3-1/4"
SOLID



Contemporary
Stabilizer Newel
4191-SP
HT. 43"
W = 3"
SOLID



Plain Box
Newel
961-56
HT. 56"
W = 4-1/2"
SOLID



Recessed Panel
Box Newel
4291
HT. 56"
W = 6"
HOLLOW



All box newels come with both
square and pyramid tops

BOX NEWELS



Adjustable
Box Newel
4592
HT. 56"
W = 5"
SOLID
Plain Box
Newel
4691
HT. 56"
W = 6-1/4"
HOLLOW



Plain Newel
4592-PLAIN
HT. 56"
W = 3-1/2"
SOLID



Stabilizer Newel
4592-SP
HT. 43"
W = 3"
SOLID



Raised Panel
Box Newel
4791
HT. 56"
W = 6-1/4"
HOLLOW



Fluted Box
Newel
4891
HT. 56"
W = 6-1/4"
HOLLOW



Recessed Panel
Box Newel
4991
HT. 56"
W = 6-1/4"
HOLLOW

All box newels stocked in Red Oak (RO)



RO-4691 Box Newel and 4923-41 Balusters (shown)



RO-4191 Box Newels paired with Versatile balusters (shown)



RO-4291 Box Newels paired with Versatile balusters (shown)

HANDRAIL & FITTINGS

6040



6040
Round Wall Rail
Diameter: 1-5/8"

RETURNED END



7009
7209
7709

6010



6010 Straight Rail
6010-B Bending Rail
bending rail includes moulding



OPENING CAP



7019
7219
7719

6210



6210 Straight Rail
6210-B Bending Rail
bending rail includes moulding



TANDEM CAP



7020
7220
7720

6710



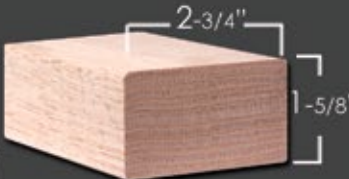
6710 Straight Rail
6713 Bending Rail
bending rail includes moulding

OVER EASING



7013
7213
7713

6002



6002 Straight Rail
Available in 8' & 16'
no fittings available

UP EASING 90 DEGREE



7012 7014
7212 7214
7712 7714

6084



6084 Straight Rail
Available in 8' & 16'
no fittings available



START EASING WITH CAP



7010
7210
7710

All handrail and fittings stocked in Red Oak (RO)

LEVEL QUARTER TURN



LEVEL QUARTER TURN WITH CAP



LEFT & RIGHT HAND S-TURNS



LEFT & RIGHT HAND TURNOUTS



2 RISE STRAIGHT GOOSENECK



LEFT & RIGHT HAND VOLUTES



2 RISE STRAIGHT GOOSENECK WITH CAP



2 RISE LEFT & RIGHT HAND GOOSENECK



2 RISE LEFT & RIGHT HAND GOOSENECK WITH CAP



All handrail and fillings stocked in Red Oak (RO)

TREADS/STEPS/LUMBER/PLY

TREADS

RO-8070

Red Oak Bull Nose Tread
1-1/16" x 11-1/2" x 42, 48, 54,
60, 72, 84, 96"



CLASSIC TREADS

RO-8070-13 x

Red Oak Tread
1-1/16" x 13" x 48, 60, 72, 96"

RO-8070-18 x

Red Oak Tread
1-1/16" x 18" x 48, 60, 72, 84"

RO-8070-20 x 60

Red Oak Tread
1-1/16" x 20" x 60"

RO-8070-20 x 72

Red Oak Tread
1-1/16" x 20" x 72"

RO-8070-24 x

Red Oak Tread
1-1/16" x 24" x 60", 72", 84", 96", 120"

RO-8070-48 x 48

Red Oak Tread
1-1/16" x 48" x 48"

RO-8070-60 x 60

Red Oak Tread
1-1/16" x 60" x 60"

RO-8070-48-MR

1-1/16" x 11-1/2" x 48"

RO-8070-54-MR

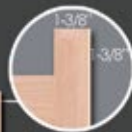
1-1/16" x 11-1/2" x 54"

RO-8070-60-MR

1-1/16" x 11-1/2" x 60"

Mitered Return(MR)(Reversible)

Overall length does not include mitered return



REMODEL TREAD WITH RISER

TREAD

Red Oak Bull Nose Tread with Cove
1-1/16" x 10-1/2" x 42, 54, 60"

RISER

Red Oak Riser
5/8" x 7-1/2" x 42, 54, 60"

RETRO-42 / RETRO-54 / RETRO-60



REMODEL RETURN TREAD WITH RISER

TREAD

Red Oak Bull Nose Tread with Cove
1-1/16" x 10-1/2" x 48, 54, 60"

RISER

Red Oak Riser
5/8" x 7-1/2" x 48, 54, 60"

RETRO-48MR / RETRO-54MR / RETRO-60MR



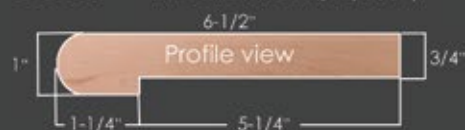
BULL NOSED LANDING TREAD

8090-6

RED OAK

8090-6B

RED OAK BENDING(26 pieces)



TONGUE & GROOVED BULL NOSED LANDING TREAD

8090-6-G

RED OAK(grooved)



TONGUE & GROOVED LUMBER

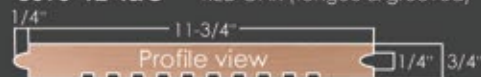
8095-8-T&G

RED OAK (tongue & grooved)



8095-12-T&G

RED OAK (tongue & grooved)



1" BULL NOSING

8080

RED OAK

8080-B

RED OAK BENDING
(5 pieces)





DOUBLE END STARTING STEP

Diameter: 13-3/4"
8015-48 (48" throat) (72" overall)
8015-54 (54" throat) (78" overall)
8015-60 (60" throat) (84" overall)
 Red Oak[RO]

Comes with:
 1" Thick Tread,
 6-3/4" Tall Riser
 Cove & Quarter Round Moulding

STARTER STEP VENEER

Width: 8"
 Length: 120"
RO-VENEER (Red Oak)



SINGLE END STARTING STEP

Diameter: 13-3/4"
8010-48 (48" throat) (60" overall)
8010-60 (60" throat) (72" overall)
8010-72 (72" throat) (84" overall)
 Red Oak[RO]

Comes with:
 1" Thick Tread,
 6-3/4" Tall Riser
 Cove & Quarter Round Moulding



SPECIAL WEDGE SHAPED DOUBLE END STARTING STEP

Diameter: 12-3/4" (small end)
 Diameter: 18-1/2" (large end)
RO-8915-48 (48" throat) (73-1/2" overall)
RO-8915-54 (54" throat) (79-1/2" overall)
 (Reversible)
 Red Oak[RO]

Comes with:
 1" Thick Tread,
 6-3/4" Tall Riser
 Cove & Quarter Round Moulding



FALSE END STARTING STEP

Diameter: 13-3/4" Diameter: 17-1/2"
 Length: 17-5/8" overall Length: 21-3/4" overall
8011 **8012**
 Red Oak[RO]

Comes with:
 1" Thick Tread,
 6-3/4" Tall Riser
 Cove & Quarter Round Moulding

PLYWOOD

PLY-1/4-MDF	MDF 1/4" x 4' x 8'	Half Sheet 1/4" x 2' x 8'
PLY-3/4-MDF	MDF 3/4" x 4' x 8'	
PLY-1/8-RO	Red Oak 1/8" x 4' x 8'	Half Sheet 1/4" x 2' x 8'
PLY-1/4-RO	Red Oak 1/4" x 4' x 8'	Half Sheet 1/4" x 2' x 8'
PLY-1/2-RO	Red Oak 1/2" x 4' x 8'	
PLY-3/4-RO	Red Oak 3/4" x 4' x 8'	
PLY-1/8-Birch	Birch 1/8" x 4' x 8'	
PLY-1/4-Birch	Birch 1/4" x 4' x 8'	Half Sheet 1/4" x 2' x 8'
PLY-1/2-Birch	Birch 1/2" x 4' x 8'	
PLY-3/4-Birch	Birch 3/4" x 4' x 8'	
PLY-3/8-Bending	Red Oak 3/8" x 4' x 8' (bending board)	

LUMBER

RO-06	Red Oak 3/4" x 5-1/2" S4S Lumber
RO-08	Red Oak 3/4" x 7-1/4" S4S Lumber
RO-08-B	Red Oak 3/4" x 7-1/4" Bending (29 pieces)
RO-12	Red Oak 3/4" x 11-1/4" S4S Lumber
MDF-06	MDF 11/16" x 5-1/4"
MDF-08	MDF 11/16" x 7-1/4"
MDF-12	MDF 11/16" x 11-1/4"

WOOD MOULDING & FLEXIBLE TRIM



RO-C8	<u>Red Oak 2-1/2" x 11/16" Colonial Casing</u>
PG-C8	<u>Paint Grade 2-1/2" x 11/16" Colonial Casing</u>
FLEX-C8	<u>Paint Grade 2-1/2" x 11/16" Colonial Casing</u>



PG-CAP MOULD	<u>Paint Grade 1-1/8" x 3/8" Cap Mould</u>
---------------------	--



RO-6007	<u>Red Oak 1-3/4" Filet</u>
PG-6007	<u>Paint Grade 1-3/4" Filet</u>



RO-6050	<u>Red Oak 1-1/4" Filet</u>
PG-6050	<u>Paint Grade 1-1/4" Filet</u>



RO-PM-1	<u>Red Oak 11/16" x 1/-1/4" RAB. Panel Mould</u>
PG-PM-1	<u>Paint Grade 11/16" x 1/-1/4" RAB. Panel Mould</u>
Flex-PM-1	<u>Flexible Smooth 11/16" x 1/-1/4" RAB. Panel Mould</u>
Flex-PM-1-WG	<u>Flexible Wood Grain 11/16" x 1/-1/4" RAB. Panel Mould</u> (1/4" Offset)



RO-PM-2	<u>Red Oak 11/16" x 1/-1/4" RAB. Panel Mould</u>
PG-PM-2	<u>Paint Grade 11/16" x 1/-1/4" RAB. Panel Mould</u>
Flex-PM-2	<u>Flexible Smooth 11/16" x 1/-1/4" RAB. Panel Mould</u>
Flex-PM-2-WG	<u>Flexible Wood Grain 11/16" x 1/-1/4" RAB. Panel Mould</u> (3/4" Offset)



RO-PM-5	<u>Red Oak 11/16" x 1-1/8" Flat Panel Mould</u>
PG-PM-5	<u>Paint Grade 11/16" x 1-1/8" Flat Panel Mould</u>
Flex-PM-5	<u>Flexible Smooth 11/16" x 1-1/8" Flat Panel Mould</u>
Flex-PM-5-WG	<u>Flexible Wood Grain 11/16" x 1-1/8" Flat Panel Mould</u>



RO-8050	<u>Red Oak 7/16" x 3/4" Base Shoe Mould</u>
Flex-MS-127	<u>Flexible Smooth 7/16" x 3/4" Base Shoe Mould</u>
Flex-MS-127-WG	<u>Flexible Wood Grain 7/16" x 3/4" Base Shoe Mould</u>



RO-8060	<u>Red Oak 3/4" x 3/4" Cove Mould</u>
PG-8060	<u>Paint Grade 3/4" x 3/4" Cove Mould</u>
Flex-MS-92	<u>Flexible Smooth 3/4" x 3/4" Cove Mould</u>
Flex-MS-92-WG	<u>Flexible Wood Grain 3/4" x 3/4" Cove Mould</u>



RO-8065	<u>Red Oak 1/2" x 1/2" Cove Mould</u>
PG-8065	<u>Paint Grade 1/2" x 1/2" Cove Mould</u>
Flex-MS-101	<u>Flexible Smooth 1/2" x 1/2" Cove Mould</u>
Flex-MS-101-WG	<u>Flexible Wood Grain 1/2" x 1/2" Cove Mould</u>



Flex-LS-105	<u>Flexible Smooth 3/4" x 3/4" Quarter Round Mould</u>
Flex-LS-105-WG	<u>Flexible Wood Grain 3/4" x 3/4" Quarter Round Mould</u>

ACCESSORIES

WALL RAIL BRACKET

1-1/4" x 2-3/8" Mounting Plate
3" Extension From Wall



HFBC.3002 (BRUSHED CHROME)
HFCV.3002 (COPPER VEIN)
HFORB.3002 (OIL RUBBED BRONZE)
HFORC.3002 (OIL RUBBED COPPER)
HFPB.3002 (POLISHED BRASS)
HFSC.3002 (SATIN CLEAR)
HFSP.3002 (SILVER VEIN)
HFSTB.3002 (SATIN BLACK)
HFAG.3002 (ASH GREY)

HANDRAIL BRACKET

2-1/16" Rd. Mounting Plate
3" Extension From Wall



HFBC.3003 (BRUSHED CHROME)
HFAN.3003 (ANTIQUE NICKEL)
HFCE.3003 (CHROME)
HFNL.3003 (NICKEL)
HFCV.3003 (COPPER VEIN)
HFORB.3003 (OIL RUBBED BRONZE)
HFORC.3003 (OIL RUBBED COPPER)
HFSC.3003 (SATIN CLEAR)
HFSP.3003 (SILVER VEIN)
HFSTB.3003 (SATIN BLACK)
HFVB.3003 (VINTAGE BRASS)
HFAG.3002 (ASH GREY)

WOOD GLUE & FILLER



FAM-O-WOOD
RO-9208 (Red Oak)

EPOXY GUN-EPC-112



EPOXY-EPC-410



EPOXY PASTE EPC-7



OAK ROSETTES



RO-7033
4"x 5-1/2"
(Red Oak)

RO-7037
4"x 5-1/2"
(Red Oak)

RO-7039
4"x 4"
(Red Oak)

OAK PLUGS



RO-9001 (3/8")
RO-9002 (1/2")
RO-9003 (5/8")
RO-9004 (3/4")
RO-9005 (1")
RO-9006 (1-1/4")
RO-9007 (1-1/2")

NEWEL FASTENER

S-9403



Sure Tile

NEWEL FASTENER

S-9401



Key Lock

NEWEL CAP

SQUARE CAP-4000

3-1/4" Square
3/4" x 1" dowel



RAIL BOLT KIT

S-9600

(Includes hex nut, spacer
and 1" Red Oak plug)



RAIL BOLT DRIVER

S-9600-D

(fits machine thread)



sold individually

DOWEL SCREW

C-905-2 (25 per bag)



DRIVER

C-905-2D

(fits wood screw thread)



sold individually



Maple



Poplar



White Oak



Red Oak (RO)



Prefinished White (PG)



Hickory/Pecan



Clear Alder



American Cherry



Walnut



Sapele
Mahogany



Brazilian Cherry

Wood Products

All wood products are stocked in Red Oak(RO) or Prefinished White(PG) unless otherwise noted.

Domestic and Exotic Wood Species

All wood products in non-stock species are available by special order.



Custom Fabrication & Powdercoating

We specialize in modifying our standard iron components to suit the needs of your specific project. Whether your project involves balusters to be extended, panels modified to ensure code compliance or matching one of our powdercoated finishes or patinas we can help.



Marketing Literature

We offer a wide array of marketing literature designed to support product sales: product catalogs, brochures, flyers, postcards and customized literature are available through our authorized dealer program.



Sales Displays & Product Samples

Our wide variety of sales displays will provide you with the tools to sell products. We have sizes to fit your floor space. Custom displays are also available.



Software & Design

Stair Artist stair design tool makes it easy to plan your staircase project. Our extensive library of CAD images and product photos will aid and inspire you in designing your staircase.

16684 Air Center Blvd.
Houston, Texas 77032
Toll Free 866.443.4848 Fax 281.443.1133
www.houseofforgings.net

Please contact us for more detailed information
or for a listing of distributors near you.

STAIR & RAILING PRODUCTS BY

